

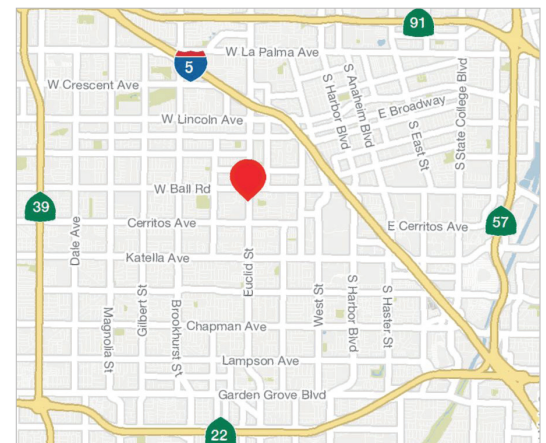


927 Euclid Street

NWC Ball Road and Euclid Street
Anaheim, CA

Property Highlights:

- Approximately 9,332 SF Sub-Anchor Opportunity and Possible Future Pad Opportunity of Approximately ±1,600 SF
- Major Signalized Intersection with Visibility and Access to both Euclid St. and Ball Rd.
- Prominent Building and Pylon Signage
- Possible Facade Remodel with Addition of Pop-out Feature and/or Tower Element



Traffic Count

Euclid St.	35,000 CPD
Ball Rd.	26,000 CPD
Total	61,000 CPD

Demographics

	1 Mile	2 Mile	3 Mile
Total Population	36,830	307,426	749,200
Average HH Income	\$82,811	\$81,633	\$85,932
No. of Employees	6,555	151,798	372,913

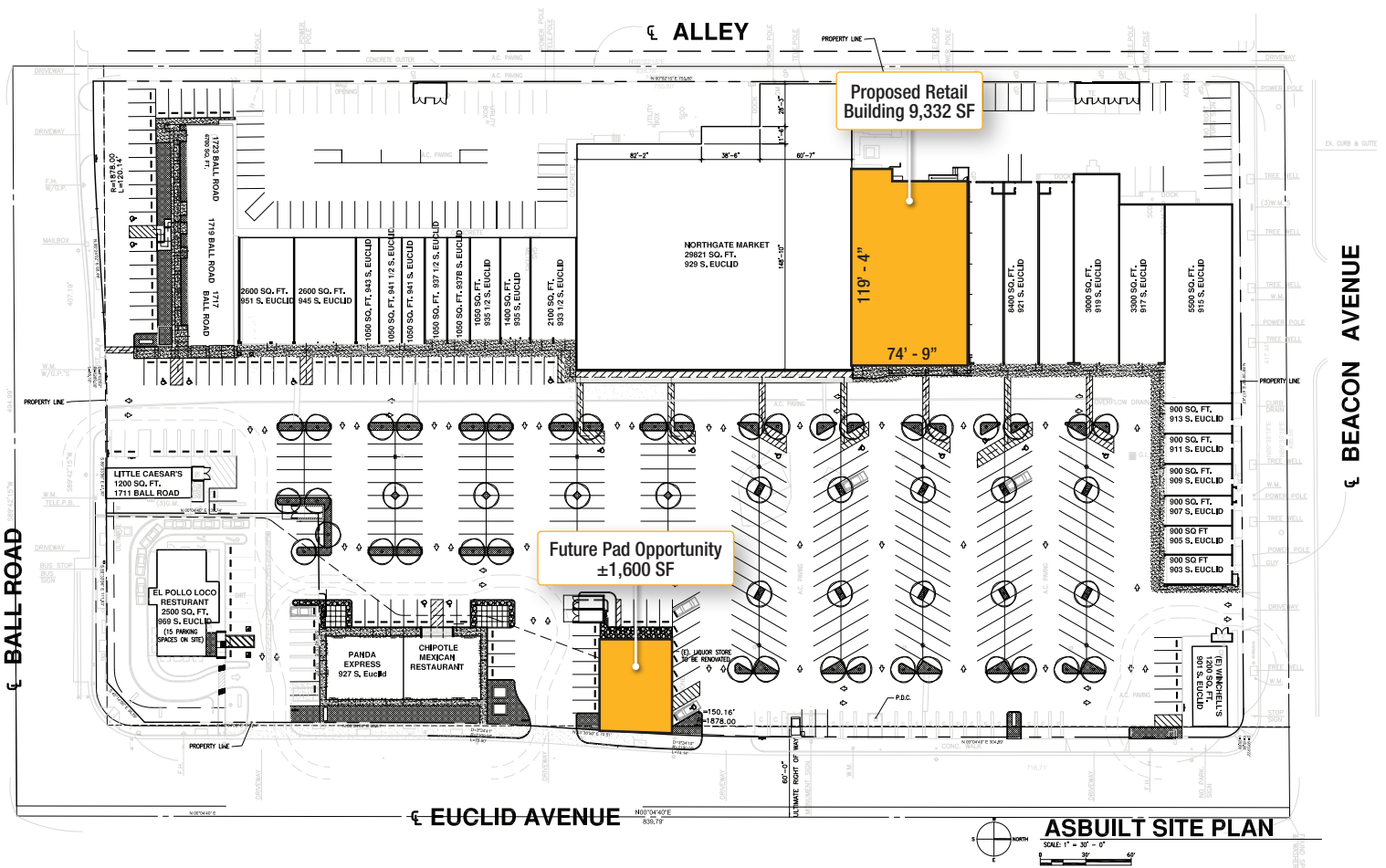
For More Information:

Steve H Weiss
Executive Vice President
swiss@naicapital.com
D 818.905.2400 x 1634
CA BRE Lic. #00680554

NAI Capital
16001 Ventura Blvd., Suite 200
Encino, California 91436
FAX 818.905.2425
naicapital.com

No warranty, express or implied, is made as to the accuracy of the information contained herein. This information is submitted subject to errors, omissions, change of price, rental or other conditions, withdrawal without notice, and is subject to any special listing conditions imposed by our principals. Cooperating brokers, buyers, tenants and other parties who receive this document should not rely on it, but should use it as a starting point of analysis, and should independently confirm the accuracy of the information contained herein through a due diligence review of the books, records, files and documents that constitute reliable sources of the information described herein. Logos are for identification purposes only and may be trademarks of their respective companies. NAI Capital, Inc. CA BRE Lic. #01990696.

Site Plan



For More Information:

Steve H Weiss
 Executive Vice President
 swiss@naicapital.com
 D 818.905.2400 x 1634
 CA BRE Lic. #00680554

NAI Capital
 16001 Ventura Blvd., Suite 200
 Encino, California 91436
 FAX 818.905.2425
naicapital.com

No warranty, express or implied, is made as to the accuracy of the information contained herein. This information is submitted subject to errors, omissions, change of price, rental or other conditions, withdrawal without notice, and is subject to any special listing conditions imposed by our principals. Cooperating brokers, buyers, tenants and other parties who receive this document should not rely on it, but should use it as a starting point of analysis and should independently confirm the accuracy of the information contained herein through a due diligence review of the books, records, files and documents that constitute reliable sources of the information described herein. Logos are for identification purposes only and may be trademarks of their respective companies. NAI Capital, Inc. CA BRE Lic. #01990696.