

18310-18330 OXNARD STREET

TARZANA, CALIFORNIA

LOS ANGELES COUNTY



For Lease

2,936 - 9,500 SF

INSTITUTIONALLY OWNED & MANAGED | FLEXIBILITY TO EXPAND | DELIVERING UNPRECEDENTED CUSTOMER SERVICE

FOR INFORMATION, CONTACT:



**MATT EHRLICH**  
**818-933-2364**  
**Cal DRE Lic #01936772**

## Highly Sought After Tarzana Industrial Suites

- Newly Renovated Industrial Suites
- Large Community Courtyard
- Excellent Southern Valley Location
- Close to the 101 FWY
- 16-18 foot Warehouse Clearance
- 10x14 Ground Level Loading Doors
- 2:1000 Parking



**Rexford  
Industrial**

## 18310 Oxnard Street: 4,555 SF

- \$1.45 PSF Modified Gross
- \$0.13 CAM
- Clean Remodeled Industrial Unit
- 800 SF Office
- High Image Street Frontage Unit
- 18 foot clearance
- 12X14 Rollup Door
- 2 ADA Remodeled Restrooms

**Available Now**

## 18314 Oxnard Street UNIT 3: 2,936 SF

- \$1.62 PSF Modified Gross
- \$0.13 CAM
- Clean Remodeled Office Space
- High Image Built Out Industrial Unit
- 16 Foot Minimum Clearance
- 10X14 Rollup Door

**Available Now**

## 18314 Oxnard Street UNIT 4: 2,936 SF

- \$1.62 PSF Modified Gross / \$0.13 CAM
- High Image Built Out Industrial Unit
- 16 Foot Minimum Clearance
- 10X14 Rollup Door

**Available Now**

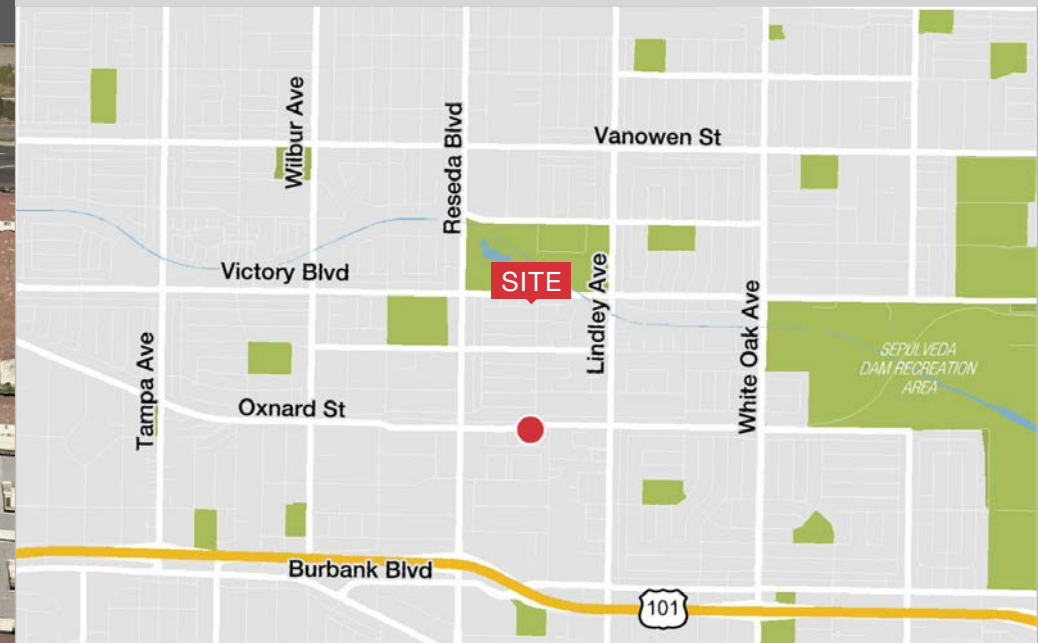
## 18330 Oxnard Street : 9,500 SF

- \$1.40 PSF Modified Gross / \$0.13 CAM
- High Image Built Out Industrial Unit
- Clean Remodeled Office Space
- 18 Foot Minimum Clearance
- 12X14 Rollup Door

**Coming Soon**

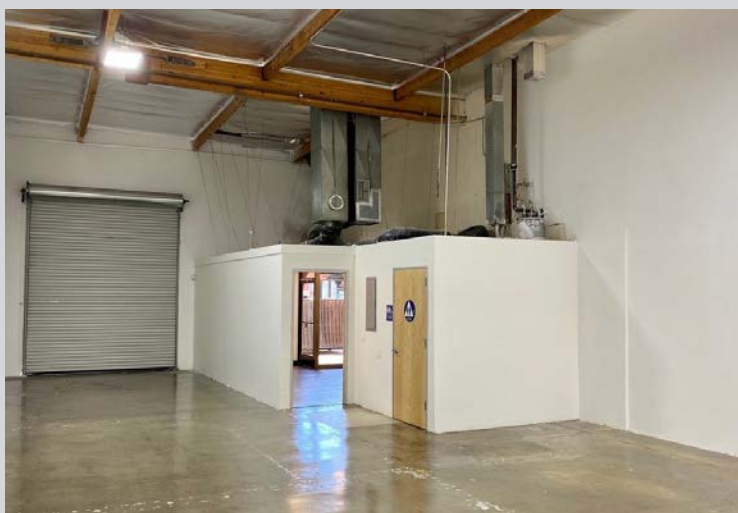
# For Lease 2,936 - 9,500 SF

18310 – 18330 Oxnard Street, Tarzana, CA



## 18310-18330 Oxnard Street

### Property Photos



**18310-18330 Oxnard Street**  
Property Photos

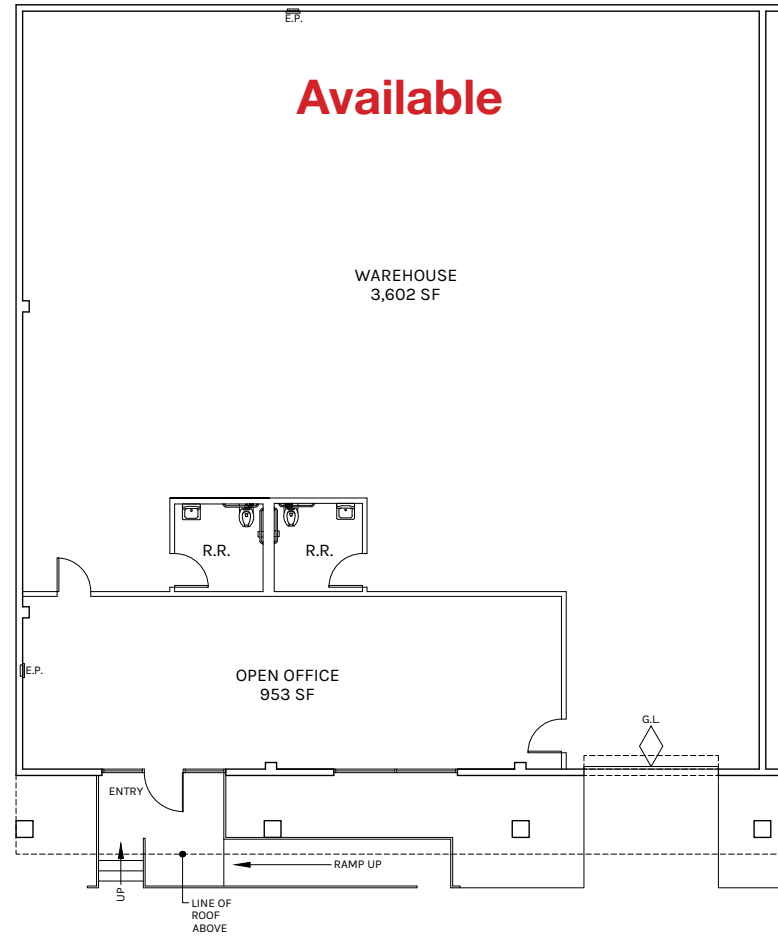


# 18310 Oxnard Street

## Floor Plan

**18310 Oxnard Street | Tarzana**

4,555 SF



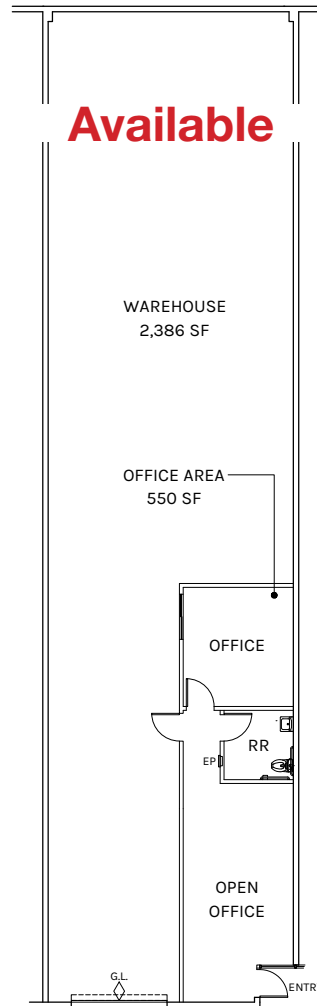
PLAN LAYOUT SUBJECT TO FIELD CONDITIONS AND MAY DIFFER FROM PLAN AS SHOWN. ALL INFORMATION PRESENTED ON THIS DRAWING IS PRESUMED TO BE ACCURATE, HOWEVER TENANT SHOULD VERIFY PERTINENT INFORMATION PRIOR TO COMMITTING TO A LEASE ANY FURNITURE OR APPLIANCES SHOWN ON PLAN ARE FOR CONCEPT ONLY AND WILL BE TENANT PROVIDED.

# 18314 Oxnard Street

## Floor Plan

**18314 Oxnard St | Tarzana**

SUITE 3 | 2,936 SF



PLAN LAYOUT SUBJECT TO FIELD CONDITIONS AND MAY DIFFER FROM PLAN AS SHOWN. ALL INFORMATION PRESENTED ON THIS DRAWING IS PRESUMED TO BE ACCURATE, HOWEVER TENANT SHOULD VERIFY PERTINENT INFORMATION PRIOR TO COMMITTING TO A LEASE. ANY FURNITURE OR APPLIANCES SHOWN ON PLAN ARE FOR CONCEPT ONLY AND WILL BE TENANT PROVIDED.

18314 Oxnard St  
Floor Plan

18314 Oxnard Street | Tarzana

UNIT 5 |  
2,936 SF

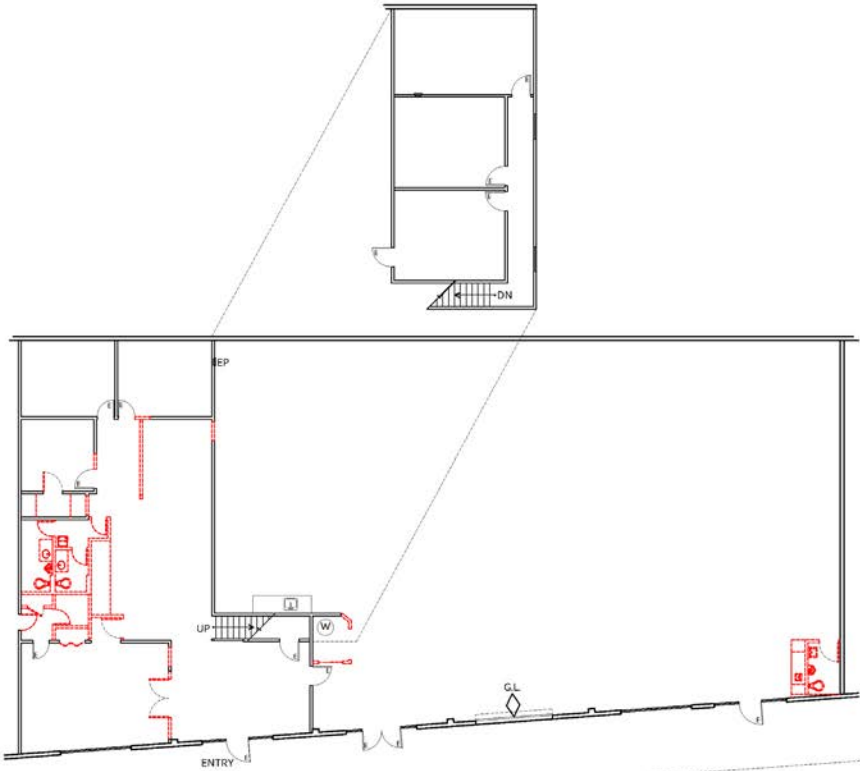


PLAN LAYOUT SUBJECT TO FIELD CONDITIONS AND MAY DIFFER FROM PLAN AS SHOWN. ALL INFORMATION PRESENTED ON THIS DRAWING IS PRESUMED TO BE ACCURATE, HOWEVER TENANT SHOULD VERIFY PERTINENT INFORMATION PRIOR TO COMMITTING TO A LEASE. ANY FURNITURE OR APPLIANCES SHOWN ON PLAN ARE FOR CONCEPT ONLY AND WILL BE TENANT PROVIDED.

# 18330 Oxnard Street

## Floor Plan

PLAN LEGEND	
	EXISTING WALL TO REMAIN
	NEW PROPOSED OR INFILL WALL
	DEMOLISH
	EXISTING DOOR ASSEMBLY TO REMAIN
	NEW DOOR ASSEMBLY
	EXISTING WINDOW ASSEMBLY TO REMAIN
	NEW WINDOW ASSEMBLY
	GRADE LEVEL DOOR SYMBOL



NOT TO SCALE  
DATE: 06/04/20

PLAN LAYOUT SUBJECT TO FIELD CONDITIONS & MAY DIFFER FROM PLAN AS SHOWN. ALL INFORMATION PRESENTED ON THIS DRAWING IS PRESUMED TO BE ACCURATE. HOWEVER TENANT SHOULD VERIFY PERTINENT INFORMATION PRIOR TO COMMITTING TO A LEASE. ANY FURNITURE OR APPLIANCES SHOWN ON PLAN ARE FOR CONCEPT ONLY AND WILL BE TENANT PROVIDED.

18330 OXNARD ST | TARZANA

DEMO PLAN

# 18330 Oxnard Street

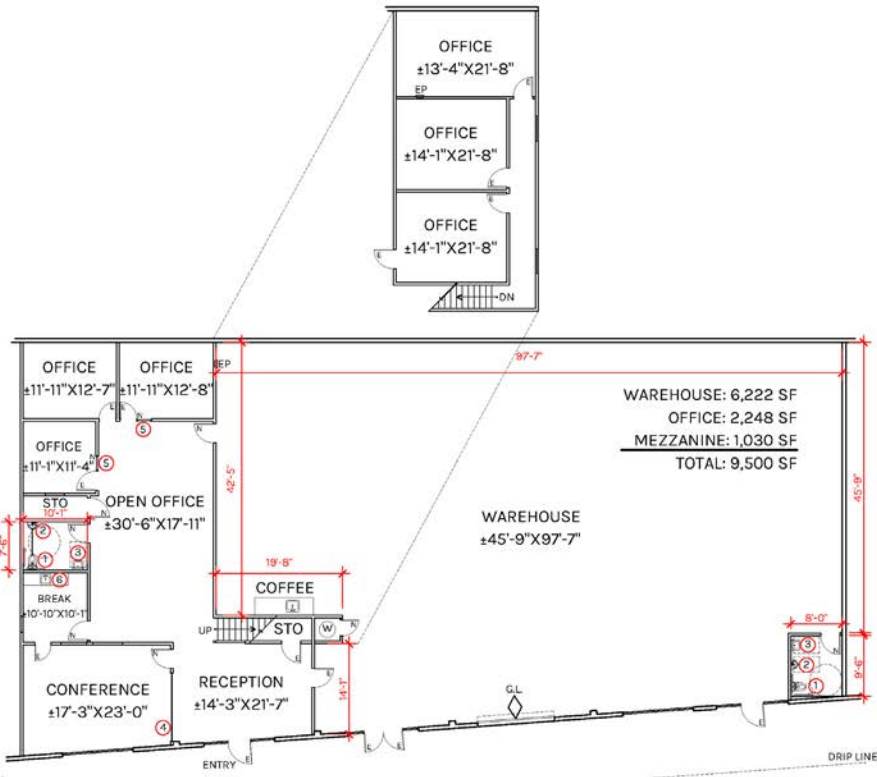
## Floor Plan

**PLAN LEGEND**

- EXISTING WALL TO REMAIN
- NEW PROPOSED OR INFILL WALL
- DEMOLISH
- EXISTING DOOR ASSEMBLY TO REMAIN
- NEW DOOR ASSEMBLY
- EXISTING WINDOW ASSEMBLY TO REMAIN
- NEW WINDOW ASSEMBLY
- GRADE LEVEL DOOR SYMBOL

**NOTES**

- ① NEW TOILET
- ② NEW URINAL
- ③ NEW SINK
- ④ NEW GLASS PARTITION
- ⑤ NEW SIDE LIGHT
- ⑥ NEW CABINET WITH SINK



WAREHOUSE: 6,222 SF  
 OFFICE: 2,248 SF  
 MEZZANINE: 1,030 SF  
 TOTAL: 9,500 SF



NOT TO SCALE  
 DATE: 08/04/20

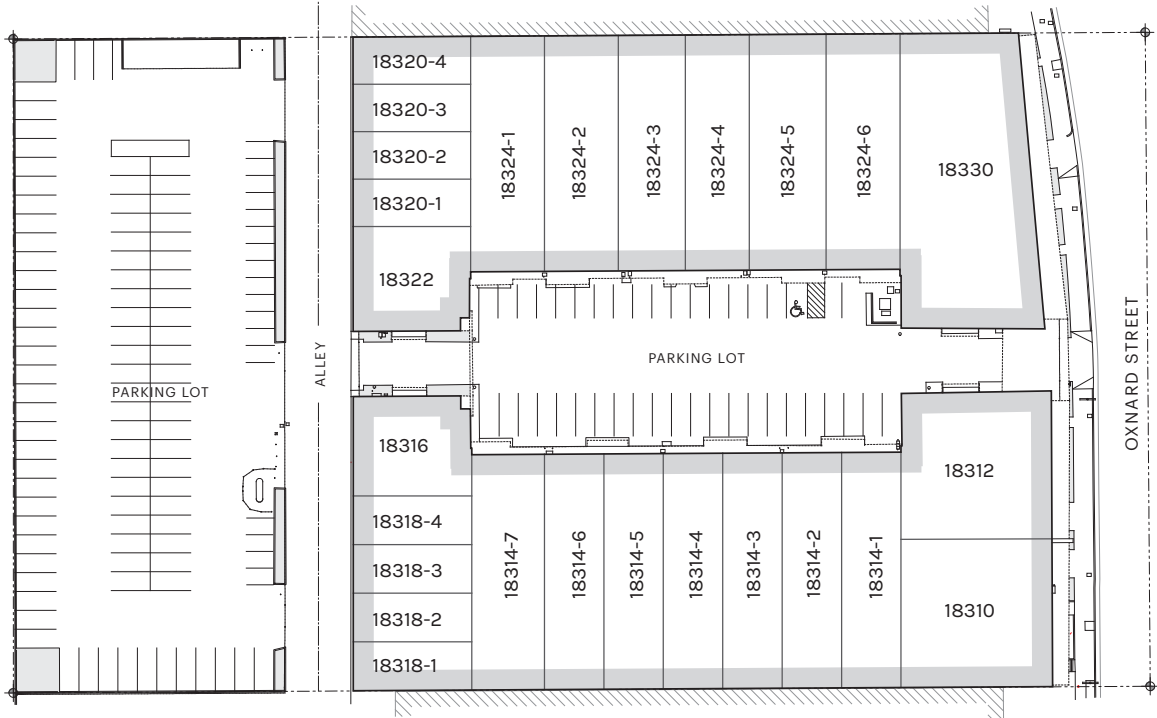
PLAN LAYOUT SUBJECT TO FIELD CONDITIONS & MAY DIFFER FROM PLAN AS SHOWN. ALL INFORMATION PRESENTED ON THIS DRAWING IS PRESUMED TO BE ACCURATE. HOWEVER TENANT SHOULD VERIFY PERTINENT INFORMATION PRIOR TO COMMITTING TO A LEASE. ANY FURNITURE OR APPLIANCES SHOWN ON PLAN ARE FOR CONCEPT ONLY AND WILL BE TENANT PROVIDED.

18330 OXNARD ST | TARZANA

SPACE PLAN

# Oxnard Street

## Site Plan



NOT TO SCALE  
DATE: 09.25.17

PLAN LAYOUT SUBJECT TO FIELD CONDITIONS & MAY DIFFER FROM PLAN AS SHOWN. ALL INFORMATION PRESENTED ON THIS DRAWING IS PRESUMED TO BE ACCURATE, HOWEVER TENANT SHOULD VERIFY PERTINENT INFORMATION PRIOR TO COMMITTING TO A LEASE.

18310-18330 OXNARD STREET | TARZANA

SITE PLAN