

# ENCINO MEDICAL TOWER

16260 VENTURA BLVD  
ENCINO, CA 91436



# AVAILABILITIES

## Available Space:

SUITE #	RATE	SIZE
105	\$3.25/SF, FSG	960 SF
225	\$3.25/SF, FSG	948 SF
430	\$3.25/SF, FSG	1,037 SF
625A	\$3.25/SF, FSG	1,014 SF
630	\$3.25/SF, FSG	600 SF

## Highlights:

- Across the Street from Encino Hospital
- Class "A" Medical Building & Ownership
- Building Management on Premises
- Building Renovation - 2015
- Pharmacy on Ground Floor

For more information, contact:

### ADAM COMORA

Senior Vice President  
818 905 2400 x1610 | 818 521.2623 cell  
acomora@naicapital.com | Cal DRE #01312271

**NAI**Capital  
COMMERCIAL REAL ESTATE SERVICES, WORLDWIDE

**THE BOULEVARD TEAM**  
LEASING AND SALES EXPERTS





# FLOOR PLAN

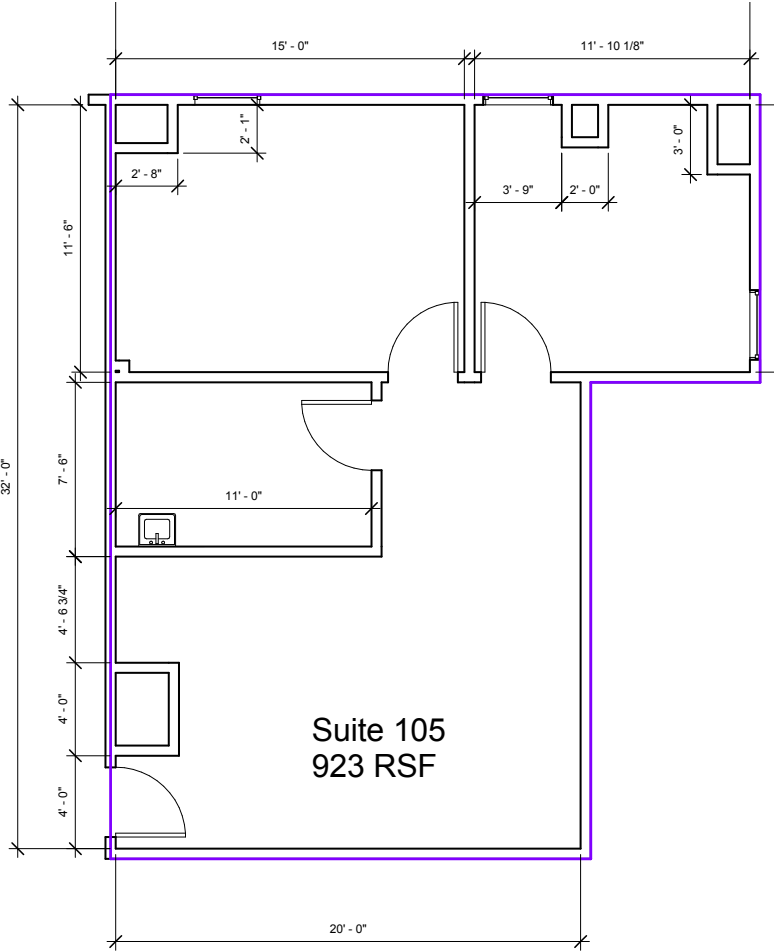
1st Floor



COMMERCIAL REAL ESTATE SERVICES, WORLDWIDE

### SUITE 105 • ± 960 SF

Not to scale and may not be accurate. For illustration purposes only.

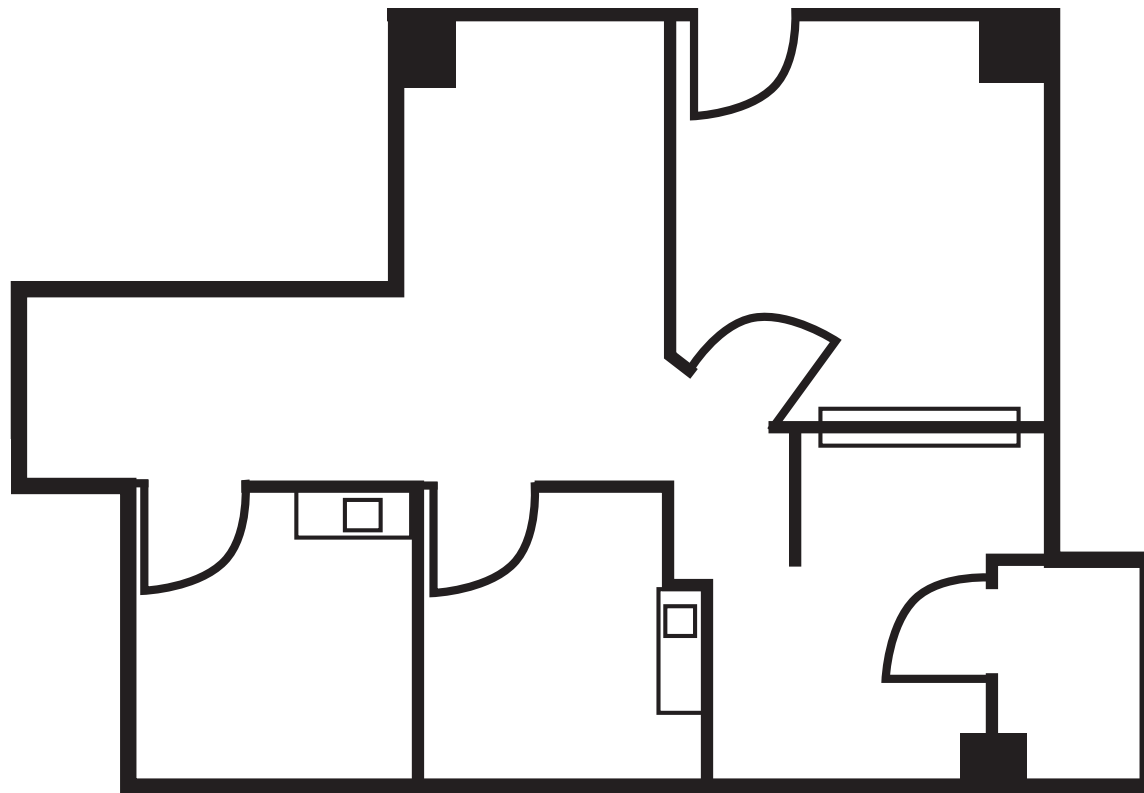


# FLOOR PLAN

2nd Floor

**SUITE 225 • ± 948 SF**

Not to scale and may not be accurate. For illustration purposes only.

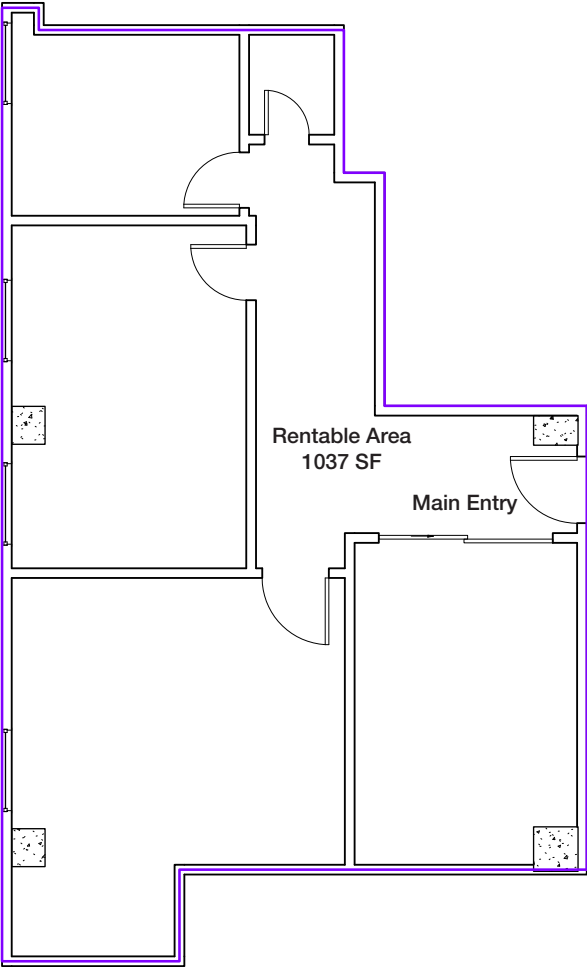


# FLOOR PLAN

4th Floor

## SUITE 430 • ± 1,037 SF

Not to scale and may not be accurate. For illustration purposes only.

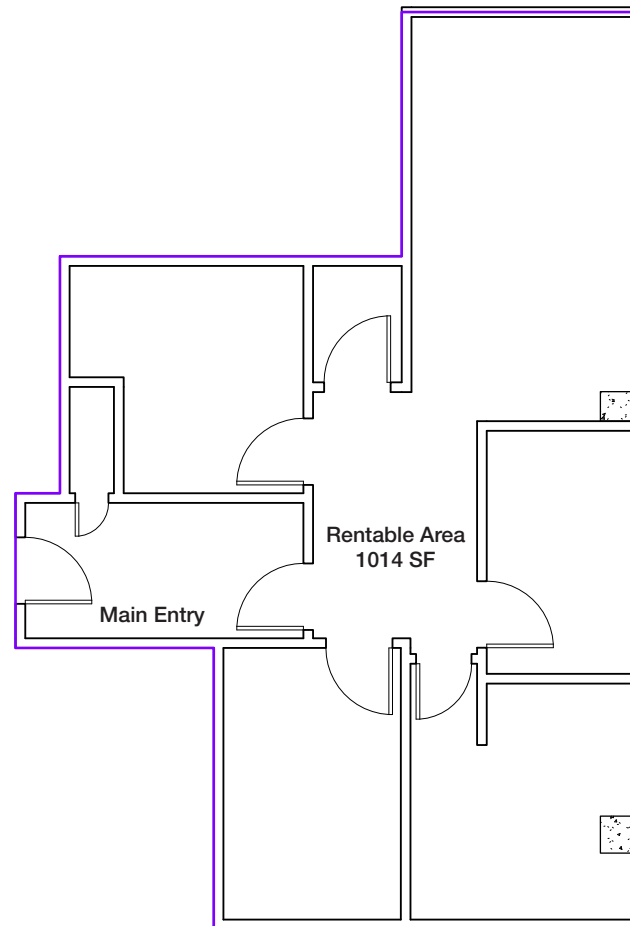


# FLOOR PLAN

6th Floor

## SUITE 625A • ± 1,014 SF

Not to scale and may not be accurate. For illustration purposes only.

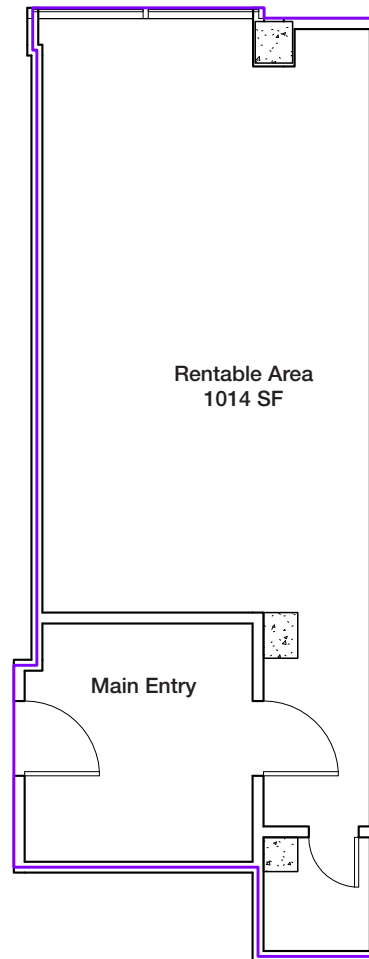


# FLOOR PLAN

6th Floor

**SUITE 630 • ± 600 SF**

Not to scale and may not be accurate. For illustration purposes only.



# ENCINO MEDICAL TOWER

16260 VENTURA BLVD  
ENCINO, CA 91436

## THE BOULEVARD TEAM

LEASING AND SALES EXPERTS

### ADAM COMORA

Senior Vice President  
818 905 2400 x1610 | 818 521.2623 cell  
acomora@naicapital.com | Cal DRE Lic #01312271



No warranty, express or implied, is made as to the accuracy of the information contained herein. This information is submitted subject to errors, omissions, change of price, rental or other conditions, withdrawal without notice, and is subject to any special listing conditions imposed by our principals, cooperating brokers, buyers, tenants and other parties who receive this document should not rely on it, but should use it as a starting point of analysis, and should independently confirm the accuracy of the information contained herein through a due diligence review of the books, records, files and documents that constitute reliable sources of the information described herein. NAI Capital CA DRE #01990696