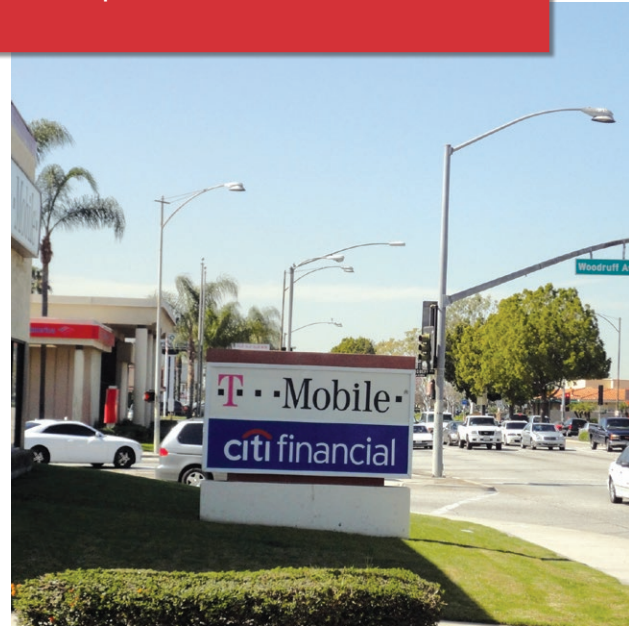


NAI Capital

Commercial Real Estate Services, Worldwide.

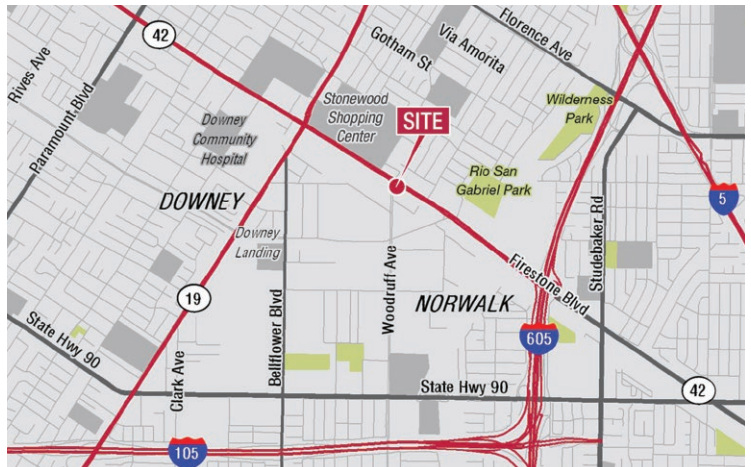
For Lease
1,500 SF Endcap
Retail Space



9400 Firestone Downey, California

Property Features

- 1,500 SF Endcap Space Former Office
- LAST SPACE AVAILABLE
- Rate: \$1.75 PSF + NNN \$0.40
- Join T-Mobile and Citi Financial
- Prime Endcap Space Available
- Ready to Move in Office Space
- Excellent Parking
- Busy Intersection - 50,000 CPD
- Adjacent to Stonewood Center



STONEWOOD CENTER®



Jesse Paster, CLS
818 905 2400 ext 124
jpaster@naicapital.com
BRE License #01316106

Patrick Ortiz
310 440 8500
portiz@naicapital.com
BRE License #01756382

NO WARRANTY, EXPRESS OR IMPLIED, IS MADE AS TO THE ACCURACY OF THE INFORMATION CONTAINED HEREIN. THIS INFORMATION IS SUBMITTED SUBJECT TO ERRORS, OMISSIONS, CHANGE OF PRICE, RENTAL OR OTHER CONDITIONS, WITHDRAWAL WITHOUT NOTICE, AND IS SUBJECT TO ANY SPECIAL LISTING CONDITIONS IMPOSED BY OUR PRINCIPALS. COOPERATING BROKERS, BUYERS, TENANTS AND OTHER PARTIES WHO RECEIVE THIS DOCUMENT SHOULD NOT RELY ON IT, BUT SHOULD USE IT AS A STARTING POINT OF ANALYSIS, AND SHOULD INDEPENDENTLY CONFIRM THE ACCURACY OF THE INFORMATION CONTAINED HEREIN THROUGH A DUE DILIGENCE REVIEW OF THE BOOKS, RECORDS, FILES AND DOCUMENTS THAT CONSTITUTE RELIABLE SOURCES OF THE INFORMATION DESCRIBED HEREIN.

16001 Ventura Blvd., Suite 200
Encino, CA 91436
fax 818 905 2425
naicapital.com

For Lease

1,500 SF Endcap
Retail Space



Jesse Paster, CLS
818 905 2400 ext 124
jpaster@naicapital.com
BRE License #01316106

Patrick Ortiz
310 440 8500
portiz@naicapital.com
BRE License #01756382