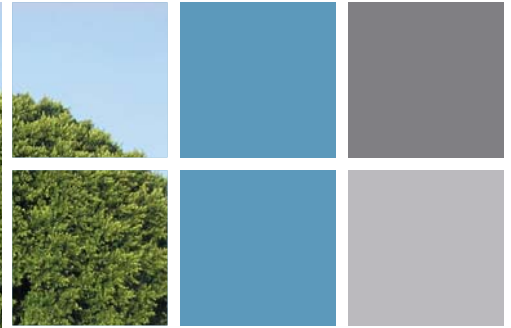


# AVAILABLE FOR SALE

## 3343 43<sup>rd</sup> Place

Los Angeles, CA



### Property Details:

- APN: 5024-019-2006
- Lot Size: 6,055sf
- Building Size: 5,984sf
- Zoning: C1
- Year Built: 1933
- Jurisdiction: Los Angeles
- PRICE: \$1,200,000
- Priced for 2008 close

### Location Highlights:

- Located in a community of significance
- Targeted redevelopment zone by CRA/LA
- Further incentives provided by the Los Angeles Development Fund
- Surrounded by successful projects by Infinity Redevelopment and Festival Companies

### Population (1 mile):

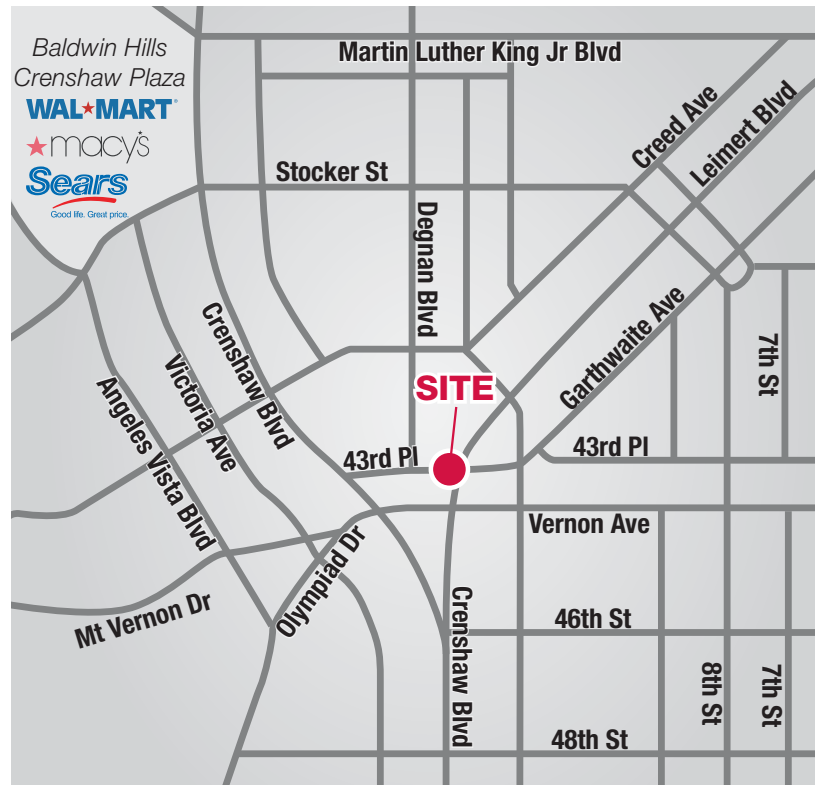
- 31,573

### Households (1 mile):

- 13,368

### Average HH income (1 mile):

- \$60,887



# NAI Capital

Commercial Real Estate Services, Worldwide.

No warranty, express or implied, is made as to the accuracy of the information contained herein. This information is submitted subject to errors, omissions, change of price, rental or other conditions, withdrawal without notice, and is subject to any special listing conditions imposed by our principals. Cooperating brokers, buyers, tenants and other parties who receive this document should not rely on it, but should use it as a starting point of analysis, and should independently confirm the accuracy of the information contained herein through a due diligence review of the books, records, files and documents that constitute reliable sources of the information described herein.

**Jesse Paster**  
Associate

818 905 2400 ext. 124  
jpaster@naicapital.com

**Patrick Ortiz**  
Vice President

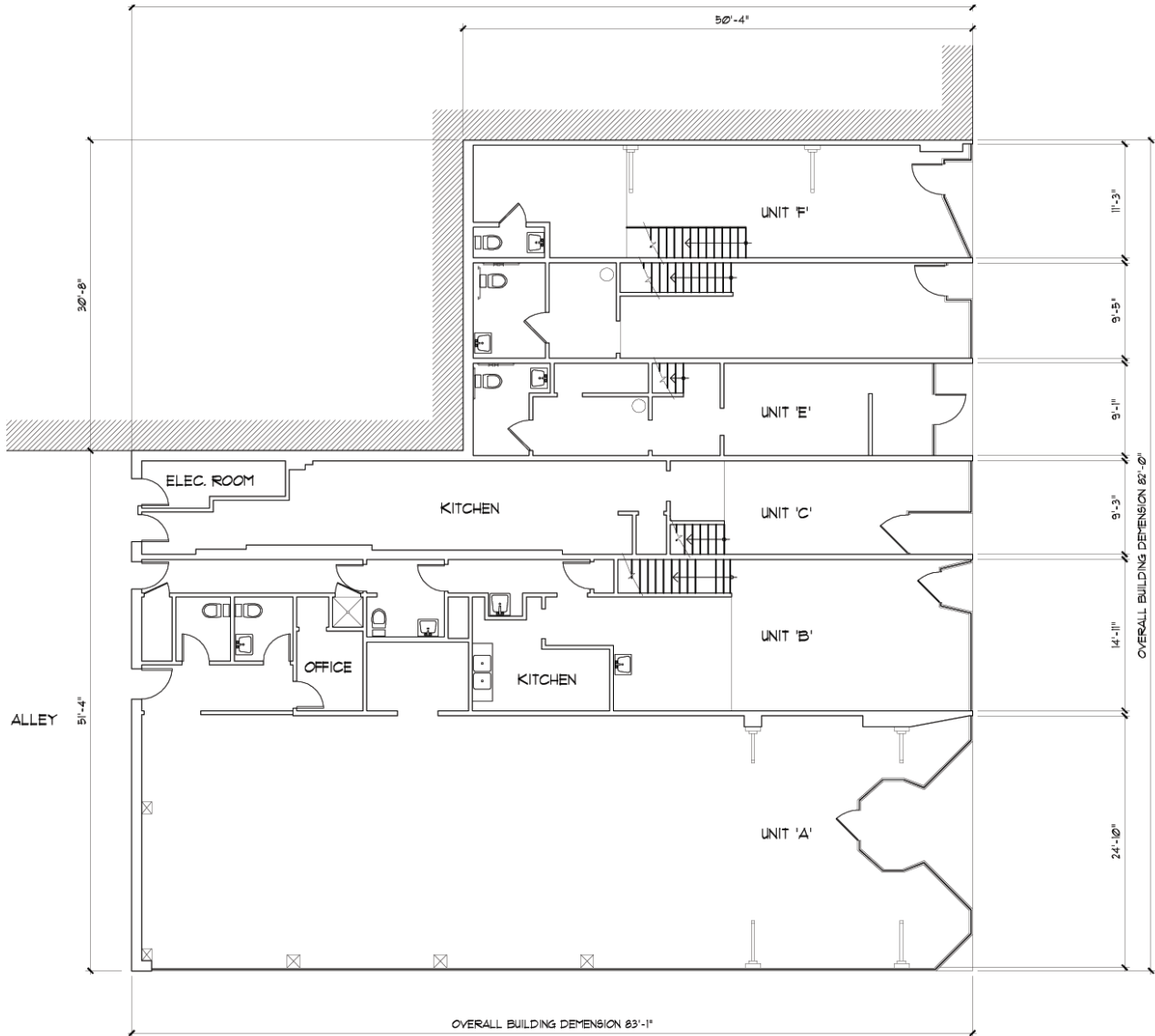
310 440 8500  
portiz@naicapital.com

AVAILABLE FOR SALE

3343 43rd Place

Los Angeles, CA

SITE PLAN



Commercial Real Estate Services, Worldwide.

No warranty, express or implied, is made as to the accuracy of the information contained herein. This information is submitted subject to errors, omissions, change of price, rental or other conditions, withdrawal without notice, and is subject to any special listing conditions imposed by our principals. Cooperating brokers, buyers, tenants and other parties who receive this document should not rely on it, but should use it as a starting point of analysis, and should independently confirm the accuracy of the information contained herein through a due diligence review of the books, records, files and documents that constitute reliable sources of the information described herein.

**Jesse Paster**  
Associate

818 905 2400 ext. 124  
jpaster@naicapital.com

**Patrick Ortiz**  
Vice President

310 440 8500  
portiz@naicapital.com