

FOR SUBLEASE

18346 Vanowen Street

Reseda, California



HIGHLIGHTS

- Join Ralph's, Big Lots and Popeye's Chicken
- **PRICE REDUCED:** ~~\$1.95~~ \$1.65/SF + NNN (~\$.37)
- Lease Term up to July 31, 2017
- 6,500 SF Pad Building
- Desirable Neighborhood Shopping Center
- Population of 223,972 in a 3 mile radius
- Average HH Income of \$68,558 in a 3 mile radius
- **NOW VACANT**
- **Call brokers for more information**



NAI Capital

Commercial Real Estate Services, Worldwide.

No warranty, express or implied, is made as to the accuracy of the information contained herein. This information is submitted subject to errors, omissions, change of price, rental or other conditions, withdrawal without notice, and is subject to any special listing conditions imposed by our principals. Cooperating brokers, buyers, tenants and other parties who receive this document should not rely on it, but should use it as a starting point of analysis, and should independently confirm the accuracy of the information contained herein through a due diligence review of the books, records, files, and documents that constitute reliable sources of the information described herein.

For information, please contact your exclusive listing agents:

Jesse Paster
Associate

818 905 2400 ext 124
jpaster@naicapital.com

Lee Black
Executive Vice President

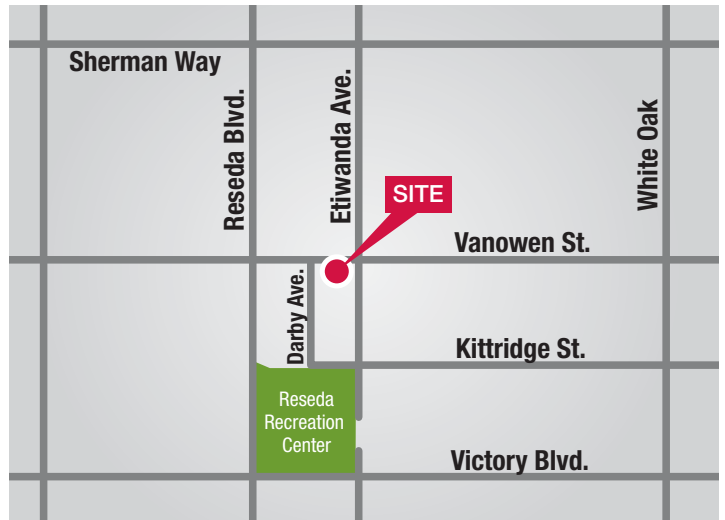
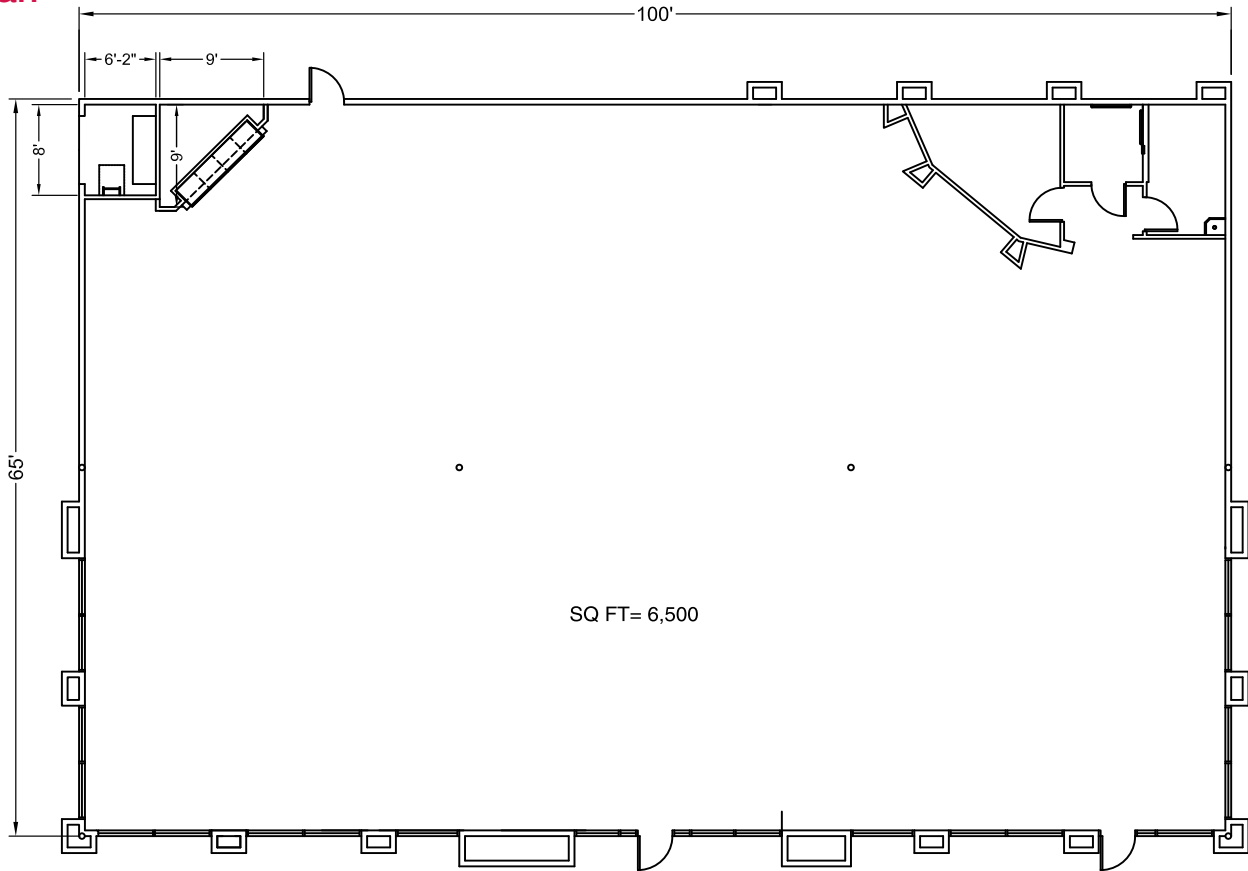
818 905 2400 ext 135
leeblack@naicapital.com

16001 Ventura Blvd.
Suite 200
Encino, CA 91436
fax 818 905 2425

18346 Vanowen Street

Reseda, California

Site Plan



NAI Capital

Commercial Real Estate Services, Worldwide.

No warranty, express or implied, is made as to the accuracy of the information contained herein. This information is submitted subject to errors, omissions, change of price, rental or other conditions, withdrawal without notice, and is subject to any special listing conditions imposed by our principals. Cooperating brokers, buyers, tenants and other parties who receive this document should not rely on it, but should use it as a starting point of analysis, and should independently confirm the accuracy of the information contained herein through a due diligence review of the books, records, files, and documents that constitute reliable sources of the information described herein.

For information, please contact your exclusive listing agents:

Jesse Paster
Associate
818 905 2400 ext 124
jpaster@naicapital.com

Lee Black
Executive Vice President
818 905 2400 ext 135
leeblack@naicapital.com

16001 Ventura Blvd.
Suite 200
Encino, CA 91436
fax 818 905 2425