



1555 Venice Blvd

Los Angeles, California 90006

Property Highlights

- Old World Charm
- Available For a Variety of Uses
- Small Retail Storefronts Available
- New World Construction
- Flex/Creative Office
- Ample Parking on Site
- Sale Price: \$4,000,000.00

Property Description

Near Downtown Los Angeles. Easy Access to multiple freeways. On Pico near Vermont Ave.

Recently remodeled and upgraded. Exposed open beam and red brick masonry throughout. New bathrooms, new electrical and new roof.

Space	Lease Rate		Size (SF)	
Demographics	0.25 Miles	0.5 Miles	1 Mile	
Total Households	1,876	6,085	27,978	
Total Population	6,686	21,443	91,281	
Average HH Income	\$34,980	\$38,309	\$36,156	



For more information

Jesse Paster, Vice President

O: 818.742.1624
jpaster@naicapital.com | CalDRE #01316106

Patrick Ortiz, Senior Vice President

O: 818.905.2400
portiz@naicapital.com | CalDRE #01756382

For Lease/Sale

2-Story Multi-Use Building



Jesse Paster

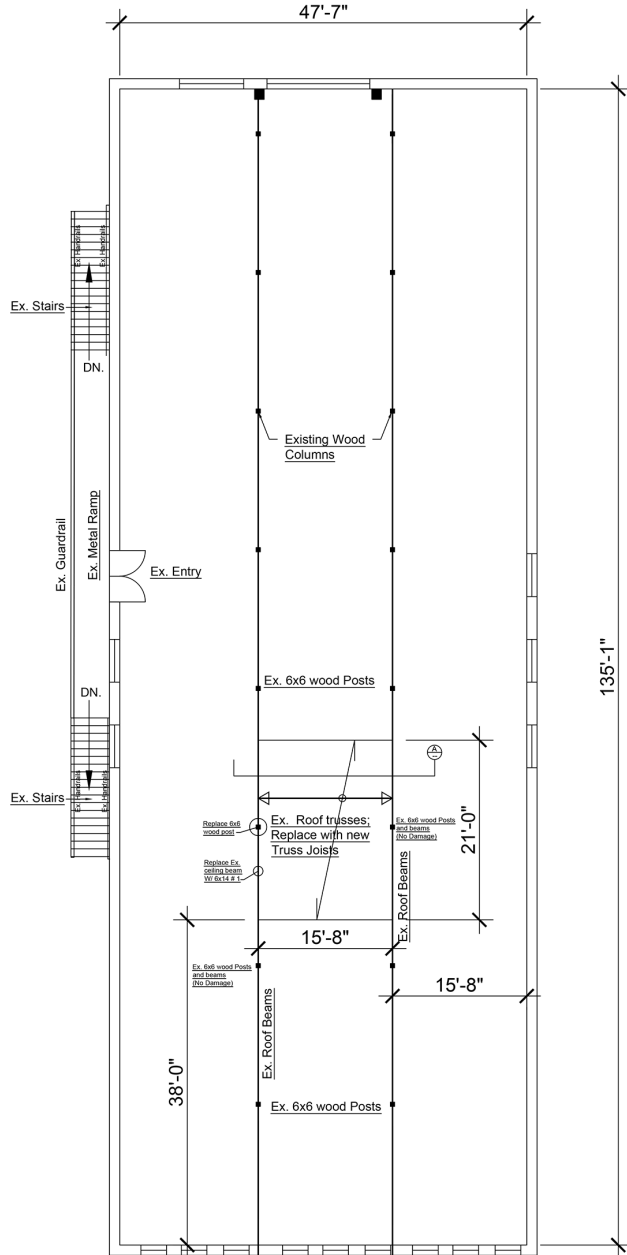
Vice President
818.742.1624
jpaster@naicapital.com
CalDRE #01316106

Patrick Ortiz

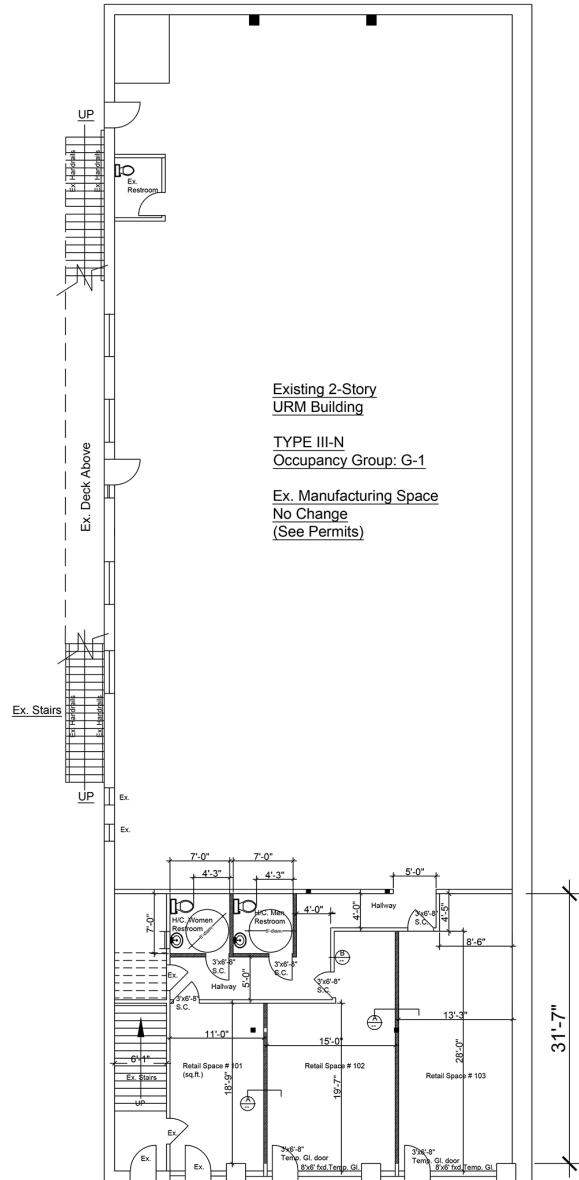
Senior Vice President
818.905.2400
portiz@naicapital.com
CalDRE #01756382

For Lease/Sale

2-Story Multi-Use Building



Existing 2-nd. Floor Plan
Framing Repair Plan
1/8"=1'-0"
(Fire damage repair to roof members)



Existing 1-st. Floor Plan
1/8"=1'-0"

Jesse Paster
Vice President
818.742.1624
jpaster@naicapital.com
CalDRE #01316106

Patrick Ortiz
Senior Vice President
818.905.2400
portiz@naicapital.com
CalDRE #01756382