

Food Space for Lease

Sepulveda and Devonshire ■ North Hills, CA

90¢ PSF RENT FOR 1 YEAR



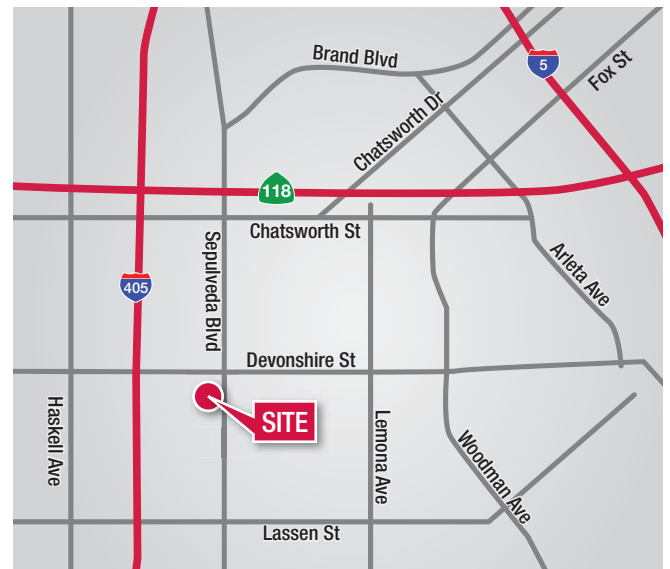
FOR LEASE

10223 Sepulveda Boulevard
North Hills, CA

HIGHLIGHTS:

- First Year Special Offer Rent Rate: \$0.90 PSF
- 1,245 SF Plus Patio
- New Construction
- Monument Sign
- Ample Parking
- Great Demographics
- No Key Money - Direct Lease with Landlord

AREA RETAILERS:



NAI Capital

Commercial Real Estate Services, Worldwide.

No warranty, express or implied, is made as to the accuracy of the information contained herein. This information is submitted subject to errors, omissions, change of price, rental or other conditions, withdrawal without notice, and is subject to any special listing conditions imposed by our principals. Cooperating brokers, buyers, tenants and other parties who receive this document should not rely on it, but should use it as a starting point of analysis, and should independently confirm the accuracy of the information contained herein through a due diligence review of the books, records, files and documents that constitute reliable sources of the information described herein.

For information, please contact your exclusive listing agents:

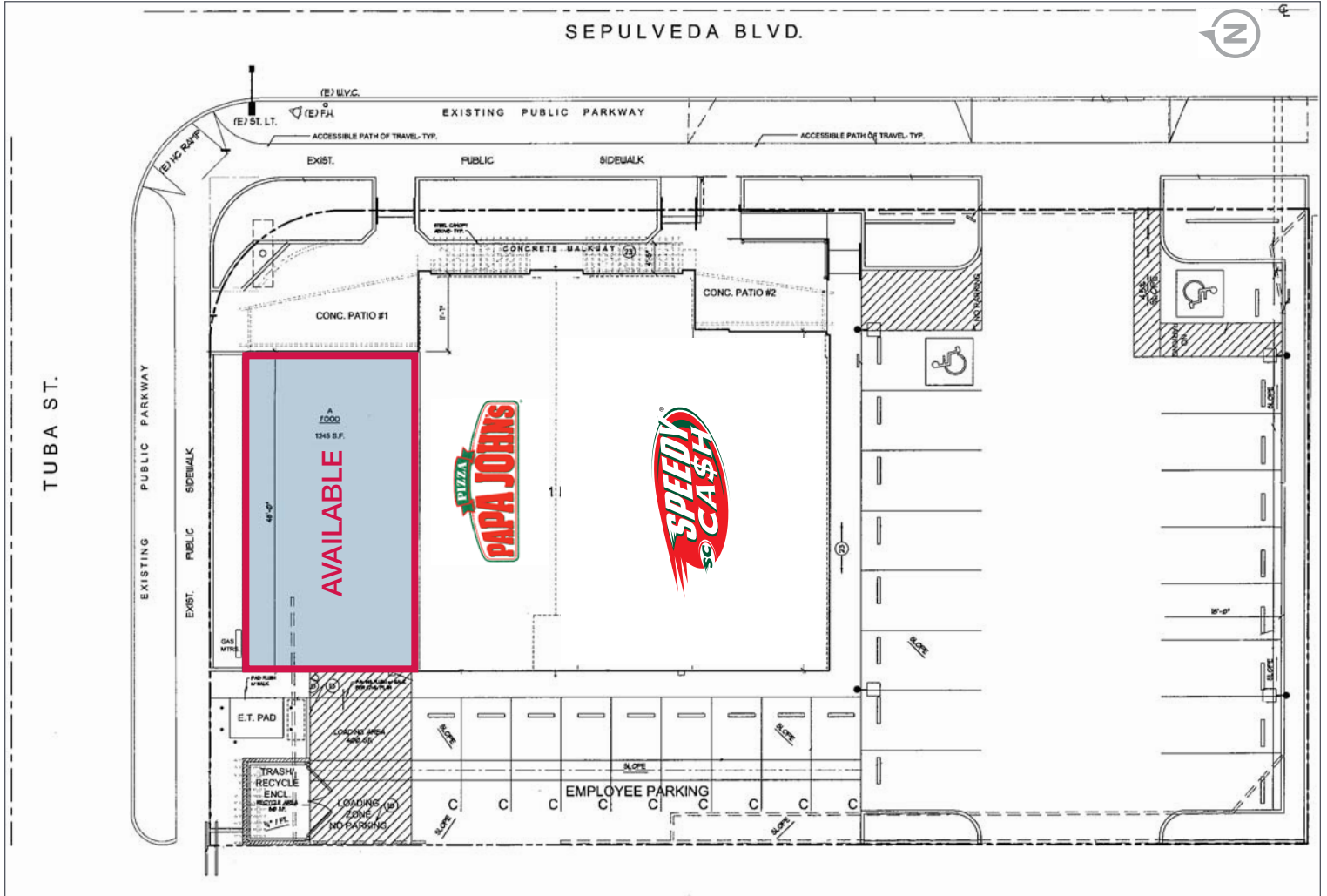
Jesse Paster
Senior Associate
818 905 2400 ext 124
DRE License #01316106
jpaster@naicapital.com

Patrick Ortiz
Vice President
310 440 8500 ext 105
DRE License #01756382
portiz@naicapital.com

Food Space for Lease

10223 Sepulveda Boulevard ■ North Hills, CA

SITE PLAN



Demographics	1 Mile	3 Miles	5 Miles
Population	73,039	316,507	730,128
Average Household Income	\$48,127	\$61,978	\$64,640



Commercial Real Estate Services, Worldwide.

No warranty, express or implied, is made as to the accuracy of the information contained herein. This information is submitted subject to errors, omissions, change of price, rental or other conditions, withdrawal without notice, and is subject to any special listing conditions imposed by our principals. Cooperating brokers, buyers, tenants and other parties who receive this document should not rely on it, but should use it as a starting point of analysis, and should independently confirm the accuracy of the information contained herein through a due diligence review of the books, records, files and documents that constitute reliable sources of the information described herein.

For information, please contact your exclusive listing agents:

Jesse Paster
Senior Associate
818 905 2400 ext 124
DRE License #01316106
jpaster@naicapital.com

Patrick Ortiz
Vice President
310 440 8500 ext 105
DRE License #01756382
portiz@naicapital.com