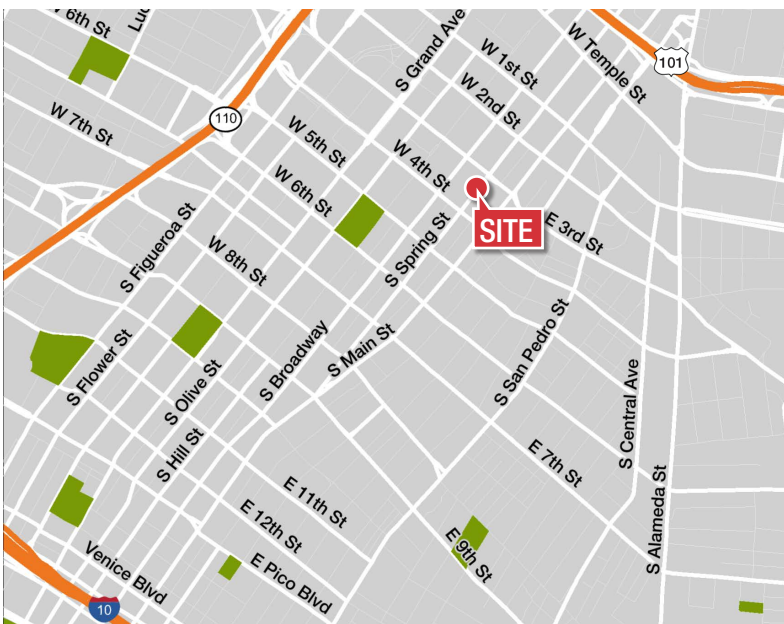


333 S. Spring Street Los Angeles, California

FOR LEASE

334 SF to 2,360 SF
Retail/Restaurant Space
Broadway Spring Center



Property Highlights

- Base Rent \$3.75/SF/Mo./NNN
- NNN's estimated at 47 cents/SF/Mo.
- Ground floor of an existing 1254 car parking garage
- Garage entry access off Broadway, Spring, 3rd and 4th Streets
- Food court seating area
- By Bidly Mason Park
- Excellent high density area
- Daytime population over 170,000
- Thousands of residences within walking distance

Demographics

	1 Mile	3 Miles	5 Miles
Population	39,187	459,818	1,197,824
Average Household Income	\$47,050	\$40,158	\$46,322
Daytime Population	170,836	364,827	559,824

* Source: ©2014 Esri

No warranty, express or implied, is made as to the accuracy of the information contained herein. This information is submitted subject to errors, omissions, change of price, rental or other conditions, withdrawal without notice, and is subject to any special listing conditions imposed by our principals. Cooperating brokers, buyers, tenants and other parties who receive this document should not rely on it, but should use it as a starting point of analysis, and should independently confirm the accuracy of the information contained herein through a due diligence review of the books, records, files and documents that constitute reliable sources of the information described herein.

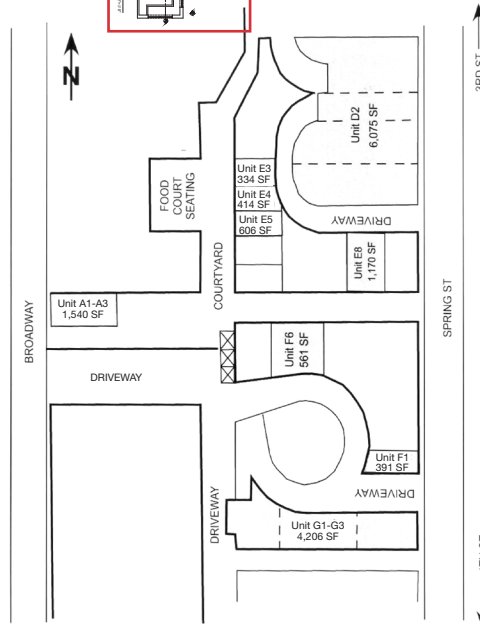
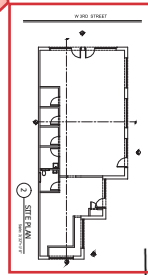
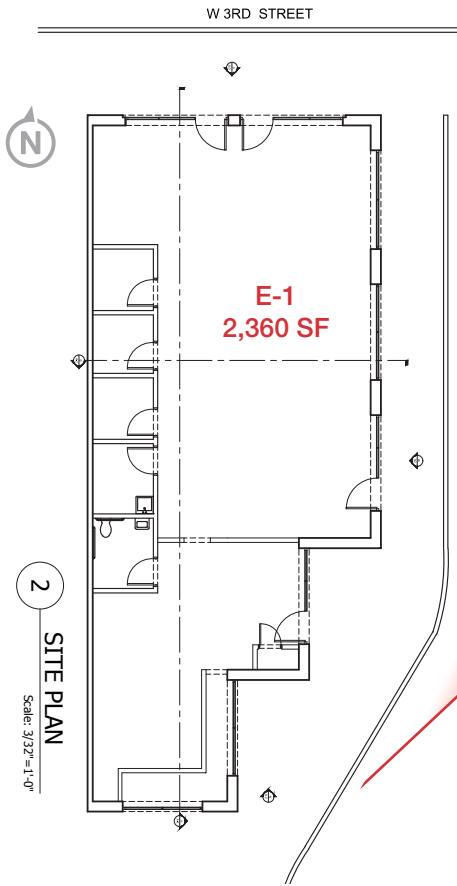
Kenneth R. Simons
Senior Vice President
Tel 805 277 4015
kensimons@naicapital.com
BRE License #00625646

2555 Townsgate Road
Suite 320
Westlake Village, CA 91361
Main 805 446 2400
www.naicapital.com

333 S. Spring Street

Los Angeles, California

FOR LEASE
334 SF to 2,360 SF
 Retail/Restaurant Space
 Broadway Spring Center



NAI Capital
 Commercial Real Estate Services, Worldwide.

Kenneth R. Simons
 Senior Vice President
 Tel 805 277 4015
 kensimons@naicapital.com
 BRE License #00625646

2555 Townsgate Road
 Suite 320
 Westlake Village, CA 91361
 Main 805 446 2400
www.naicapital.com

No warranty, express or implied, is made as to the accuracy of the information contained herein. This information is submitted subject to errors, omissions, change of price, rental or other conditions, withdrawal without notice, and is subject to any special listing conditions imposed by our principals. Cooperating brokers, buyers, tenants and other parties who receive this document should not rely on it, but should use it as a starting point of analysis, and should indicate https://maps.gstatic.com/intl/en_us/mapfiles/cb/minimap_arrows.png independently confirm the accuracy of the information contained herein through a due diligence review of the books, records, files and documents that constitute reliable sources of the information described herein.

333 S. Spring Street

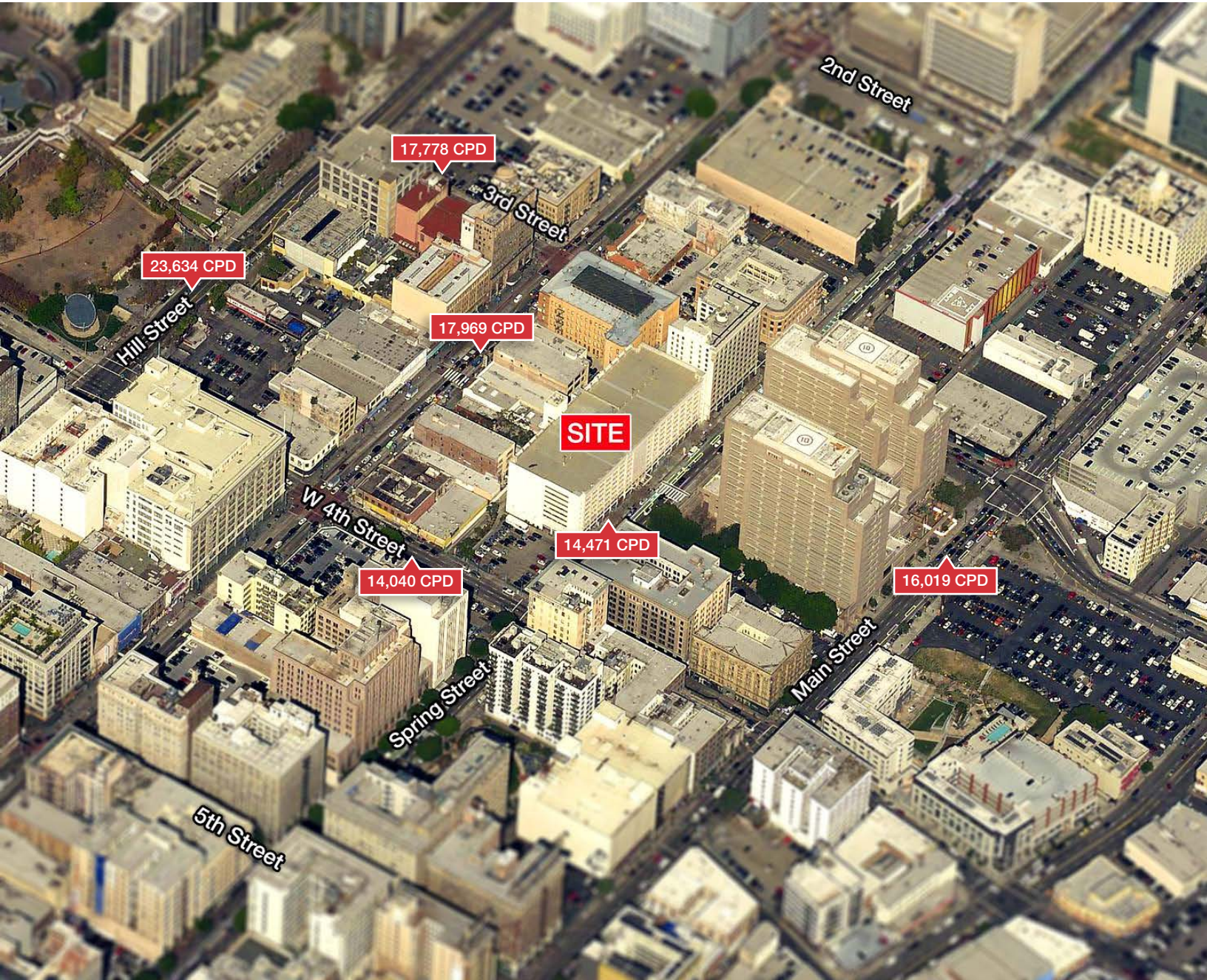
Los Angeles, California

FOR LEASE

334 SF to 2,360 SF

Retail/Restaurant Space
Broadway Spring Center

Aerial



NAICapital

Commercial Real Estate Services, Worldwide.

Kenneth R. Simons
Senior Vice President
Tel 805 277 4015
kensimons@naicapital.com
BRE License #00625646

2555 Townsgate Road
Suite 320
Westlake Village, CA 91361
Main 805 446 2400
www.naicapital.com

No warranty, express or implied, is made as to the accuracy of the information contained herein. This information is submitted subject to errors, omissions, change of price, rental or other conditions, withdrawal without notice, and is subject to any special listing conditions imposed by our principals. Cooperating brokers, buyers, tenants and other parties who receive this document should not rely on it, but should use it as a starting point of analysis, and should indicate https://maps.gstatic.com/intl/en_us/mapfiles/cb/minimap_arrows.png independently confirm the accuracy of the information contained herein through a due diligence review of the books, records, files and documents that constitute reliable sources of the information described herein.

333 S. Spring Street

Los Angeles, California

FOR LEASE

334 SF to 2,360 SF

Retail/Restaurant Space
Broadway Spring Center

Restaurant/Points of Interest Map



Commercial Real Estate Services, Worldwide.

Kenneth R. Simons
Senior Vice President
Tel 805 277 4015
kensimons@naicapital.com
BRE License #00625646

2555 Townsgate Road
Suite 320
Westlake Village, CA 91361
Main 805 446 2400
www.naicapital.com

No warranty, express or implied, is made as to the accuracy of the information contained herein. This information is submitted subject to errors, omissions, change of price, rental or other conditions, withdrawal without notice, and is subject to any special listing conditions imposed by our principals. Cooperating brokers, buyers, tenants and other parties who receive this document should not rely on it, but should use it as a starting point of analysis, and should not rely on it without independently confirming the accuracy of the information contained herein through a due diligence review of the books, records, files and documents that constitute reliable sources of the information described herein.

333 S. Spring Street

Los Angeles, California

FOR LEASE
334 SF to 2,360 SF
Retail/Restaurant Space
Broadway Spring Center

Retail Map



Commercial Real Estate Services, Worldwide.

Kenneth R. Simons
Senior Vice President
Tel 805 277 4015
kensimons@naicapital.com
BRE License #00625646

2555 Townsgate Road
Suite 320
Westlake Village, CA 91361
Main 805 446 2400
www.naicapital.com

No warranty, express or implied, is made as to the accuracy of the information contained herein. This information is submitted subject to errors, omissions, change of price, rental or other conditions, withdrawal without notice, and is subject to any special listing conditions imposed by our principals. Cooperating brokers, buyers, tenants and other parties who receive this document should not rely on it, but should use it as a starting point of analysis, and should ind https://maps.gstatic.com/intl/en_us/mapfiles/cb/minimap_arrows.png ependently confirm the accuracy of the information contained herein through a due diligence review of the books, records, files and documents that constitute reliable sources of the information described herein.