



Commercial Real Estate Services, Worldwide.

For Lease
\$0.72 PSF MG
Industrial Space



3608 Arden Drive

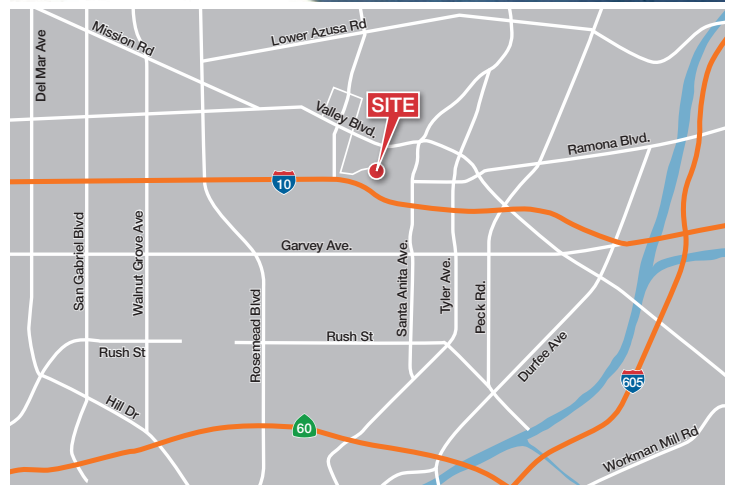
El Monte, California

Property Features:

- **COMPLEX SIZE:** 22,050 SF
- **PARKING:** Uncovered Paved Lot
- **POWER:** 3 phase 120/240 Volts and 100 Amps (Tenant to Verify)
- **CLEAR HEIGHT:** 14'
- **DOORS:** One 10' x 12' Grade Level Panel
- One (1) Small Office and Restroom
- **ZONING:** EMM1
- Close to the I-10 & I-605 Freeways

Space Available:

Unit P: 1,540 SF

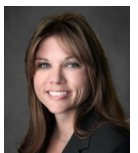


Commercial Real Estate Services, Worldwide.

Dan Bacani
Senior Vice President
626.204.1525 Direct
dbacani@naicapital.com
www.bacani-taylor.com
BRE Lic. #01385413



Marie Taylor - LEED AP
Senior Vice President
626.204.1520 Direct
mtaylor@naicapital.com
www.bacani-taylor.com
BRE Lic. #01233430



No warranty, express or implied, is made as to the accuracy of the information contained herein. This information is submitted subject to errors, omissions, change of price, rental or other conditions, withdrawal without notice, and is subject to any special listing conditions imposed by our principals. Cooperating brokers, buyers, tenants and other parties who receive this document should not rely on it, but should use it as a starting point of analysis, and should independently confirm the accuracy of the information contained herein through a due diligence review of the books, records, files and documents that constitute reliable sources of the information described herein.

3608 Arden Drive

El Monte, California

Site Plan: Availabilities

For Lease
\$0.72 PSF MG
Industrial Space



NAI Capital
Commercial Real Estate Services, Worldwide.

Dan Bacani
Senior Vice President
626.204.1525 Direct
dbacani@naicapital.com
www.bacani-taylor.com
BRE Lic. #01385413



Marie Taylor - LEED AP
Senior Vice President
626.204.1520 Direct
mtaylor@naicapital.com
www.bacani-taylor.com
BRE Lic. #01233430



No warranty, express or implied, is made as to the accuracy of the information contained herein. This information is submitted subject to errors, omissions, change of price, rental or other conditions, withdrawal without notice, and is subject to any special listing conditions imposed by our principals. Cooperating brokers, buyers, tenants and other parties who receive this document should not rely on it, but should use it as a starting point of analysis, and should independently confirm the accuracy of the information contained herein through a due diligence review of the books, records, files and documents that constitute reliable sources of the information described herein.