

FOR LEASE

Up to 37,000 SF

Medical/Office/Retail Space Available



## 2210 Highland Ave.

San Bernardino, CA 92402

### Property Highlights

- Former San Manuel Indian Medical/Health Clinic
- Prime medical/office space on busy Highland Ave.
- Prime retail space, join Title Max on site
- Plenty of on-site parking
- Private health clinic main entrance
- Private elevator
- Excellent frontage, signage and traffic on Highland Ave.
- Located 3.4 miles from S. Bernardine Medical Hospital
- Up to 37,000 SF available

**Marcelle M. Williams**

Senior Associate

909 945 2339

mwilliams@naicapital.com

CA BRE Lic. #00935159

800 N Haven Ave.

Suite 400

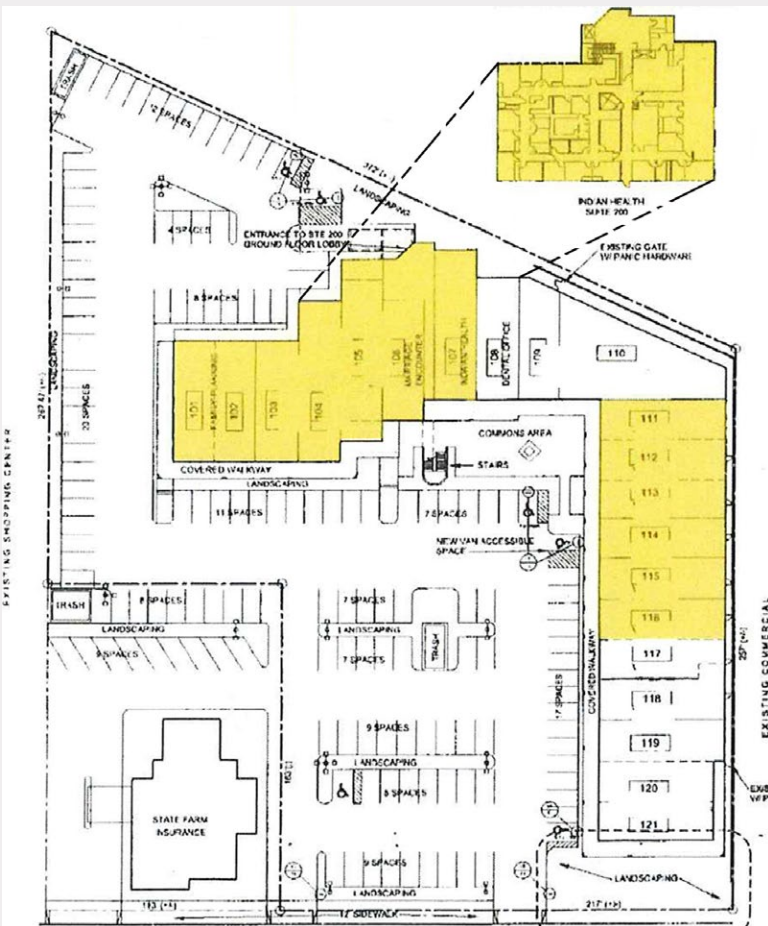
Ontario, California 91764

909 945 2338 fax

naicapital.com

**FOR LEASE**  
**Up to 37,000 SF**  
 Medical/Office/Retail Space Available

**2210 Highland Ave.**  
 San Bernardino, CA 92402



**Population**

- 1 Mile Radius: 21,951
- 3 Mile Radius: 123,764
- 5 Mile Radius: 224,918

**Traffic Count**

- Highland Ave: 21,478 CPD
- Foothill 210 Freeway: 94,000 CPD

**NAI Capital**  
 Commercial Real Estate Services, Worldwide.

**Marcelle M. Williams**  
 Senior Associate  
 909 945 2339  
 mwilliams@naicapital.com  
 CA BRE Lic. #00935159

800 N Haven Ave.  
 Suite 400  
 Ontario, California 91764  
 909 945 2338 fax  
 naicapital.com

No warranty, express or implied, is made as to the accuracy of the information contained herein. This information is submitted subject to errors, omissions, change of price, rental or other conditions, withdrawal without notice, and is subject to any special listing conditions imposed by our principals. Cooperating brokers, buyers, tenants and other parties who receive this document should not rely on it, but should use it as a starting point of analysis, and should independently confirm the accuracy of the information contained herein through a due diligence review of the books, records, files and documents that constitute reliable sources of the information described herein.