

For Sale
Church / School
16,048 Sq. Ft.



4622 Wadsworth Ave.
Los Angeles, CA 90011

Property Highlights

- **Price Reduced to \$2,000,000.**
- 16,048 Square Foot Church / School
- Sits on just under an acre of land (38,665 SF)
- Includes kitchen, fellowship hall, 8 classrooms and 4 offices
- Sanctuary with approximately 434 seats
- Two HVAC Units Included
- Roof was repaired recently, in 2008
- Zoned R3
- Extremely High Density Population



For more information:

Dawn Lowder, Vice President

909 945 2339
dawnlowder@naicapital.com
BRE License #00380377

Bill Lowder, Vice President

909 945 2339
blowder@naicapital.com
BRE License #01160467

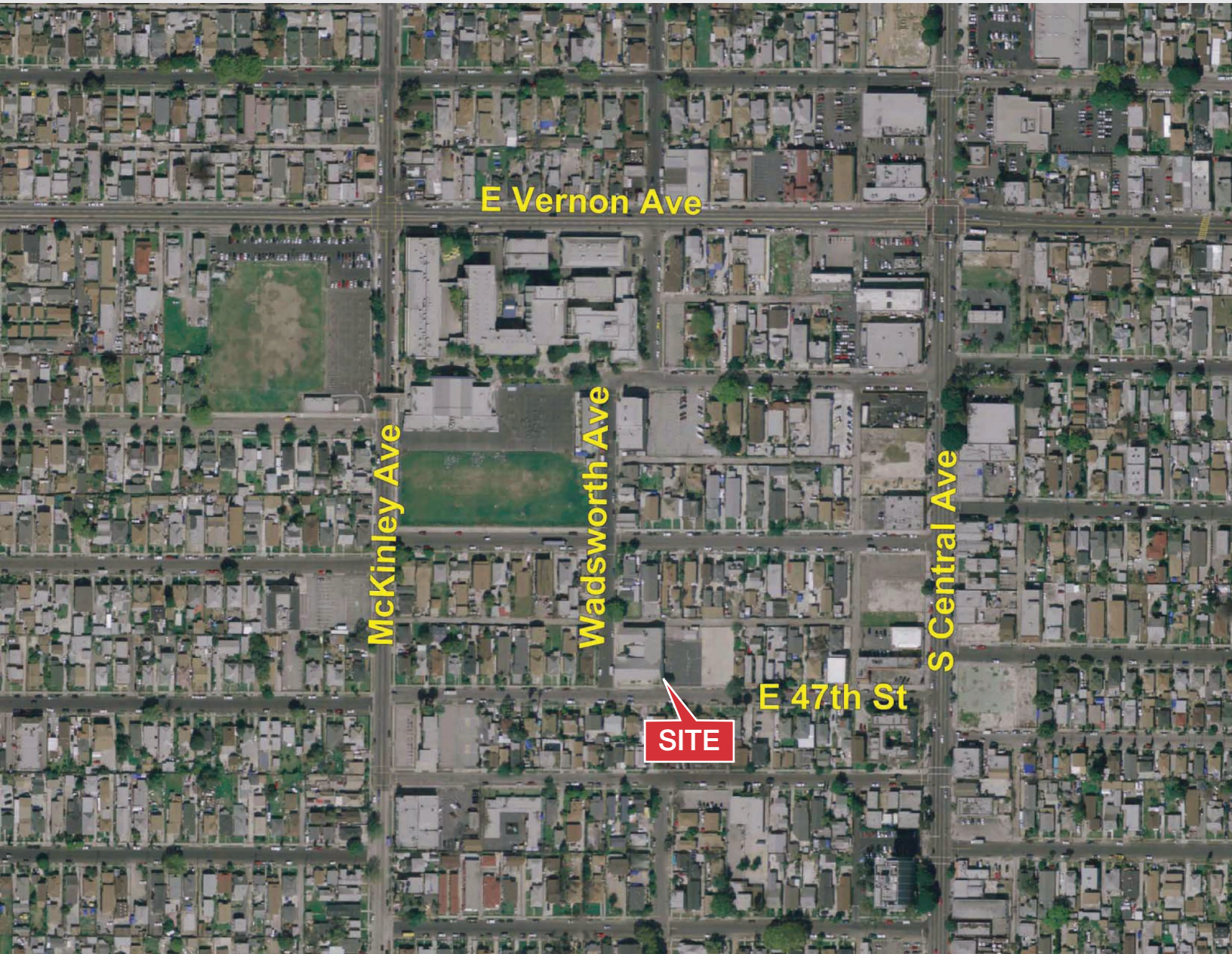
Jared Major Himes, Associate

909 945 2339
jhimes@naicapital.com
BRE License #01921954

Aerial Photograph

4622 Wadsworth Ave.

Los Angeles, CA 90011



For more information:

Dawn Lowder

909 945 2339

dawnlowder@naicapital.com

BRE License #00380377

Bill Lowder

909 945 2339

blowder@naicapital.com

BRE License #01160467

Jared Major Himes

909 945 2339

jhimes@naicapital.com

BRE License #01921954

NAI Capital Ontario

800 N. Haven Ave. Suite 100

Ontario, CA 91764

naicapital.com