

For Lease Low Coverage Industrial Building on 17.5 Acres

9121-9129 Cherry Avenue
Fontana, California



Commercial Real Estate Services, Worldwide.

No warranty, express or implied, is made as to the accuracy of the information contained herein. This information is submitted subject to errors, omissions, change of price, rental or other conditions, withdrawal without notice, and is subject to any special listing conditions imposed by our principals. Cooperating brokers, buyers, tenants and other parties who receive this document should not rely on it, but should use it as a starting point of analysis, and should independently confirm the accuracy of the information contained herein through a due diligence review of the books, records, files and documents that constitute reliable sources of the information described herein.

Nicholas Chang

Vice President
909.945.2339
NChang@naicapital.com
DRE License #01344844

Richard Lee

Vice President
909.945.2339
RLee@naicapital.com
DRE License #01757870

John Boyer

Executive Vice President
909.945.2339
JBoyer@naicapital.com
DRE License #01022177

For Lease

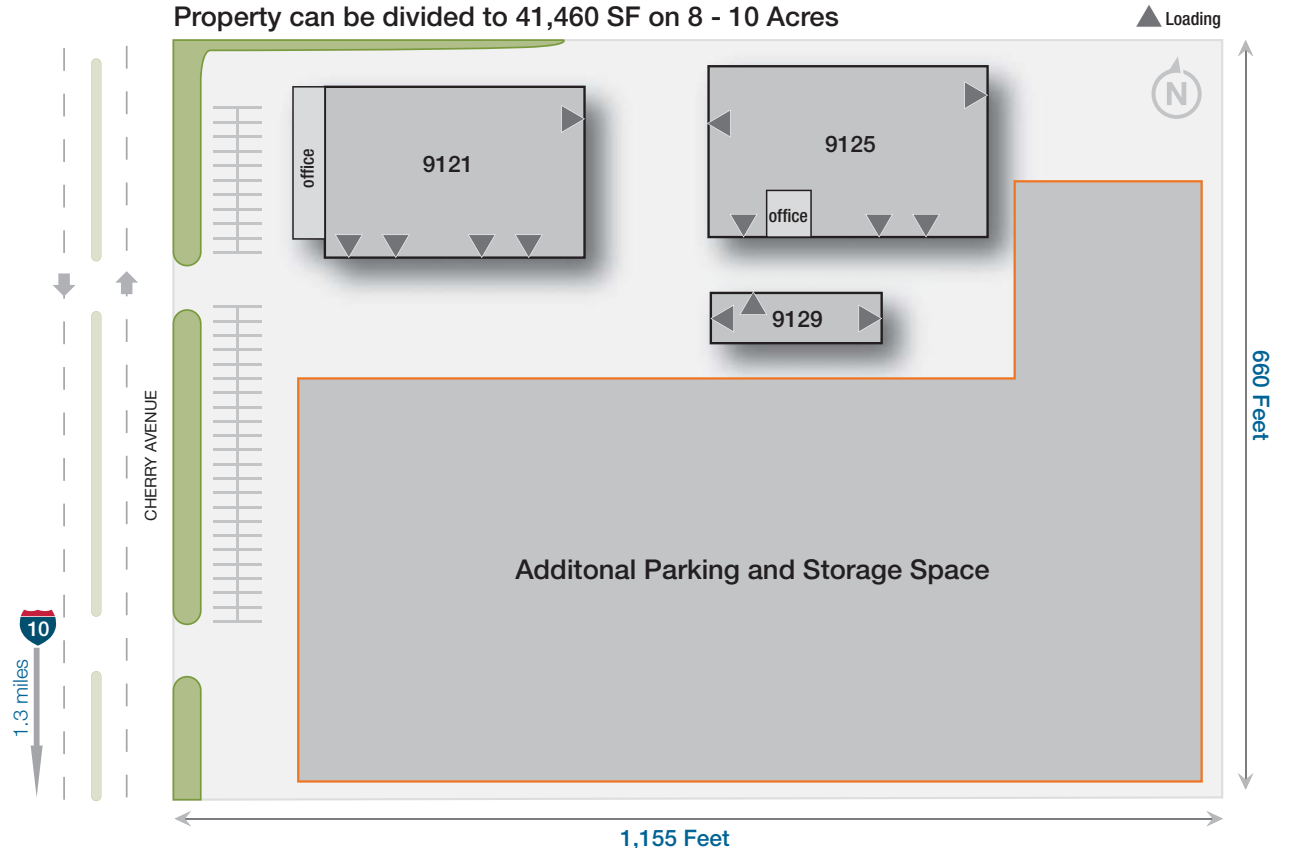
Low Coverage Industrial Building on 17.5 Acres

9121-9129 Cherry Avenue
Fontana, California

Key Features:

- Three buildings totaling 84,960 SF located on approximately 17.5 total acres of land
- Huge private yard area can accommodate outside storage of materials, vehicles, and other heavy industrial uses
- 13 grade level loading doors, 2 dock high doors
- 3,200 Amps, 480V, 3 phase power and 20' minimum warehouse ceilings
- Concrete Tilt-Up Construction built in 1986.
- 6,960 SF of offices
- Major street identity on Cherry Avenue, located directly across from the California Speedway
- Divisible to 41,460 SF with 8 – 10 acres of land

+/- 17.55 Acres
Property can be divided to 41,460 SF on 8 - 10 Acres



	9121	9125	9129
OFFICE SPACE SF	3,960	3,000	
WAREHOUSE SF	37,500	34,500	6,000
POWER	600	2,000	600
LOADING	5 GL	5 GL	3 GL
CLEARANCE HEIGHT	20'	20'	20'



Commercial Real Estate Services, Worldwide.

No warranty, express or implied, is made as to the accuracy of the information contained herein. This information is submitted subject to errors, omissions, change of price, rental or other conditions, withdrawal without notice, and is subject to any special listing conditions imposed by our principals. Cooperating brokers, buyers, tenants and other parties who receive this document should not rely on it, but should use it as a starting point of analysis, and should independently confirm the accuracy of the information contained herein through a due diligence review of the books, records, files and documents that constitute reliable sources of the information described herein.

Nicholas Chang

Vice President
909.945.2339
NChang@naicapital.com
DRE License #01344844

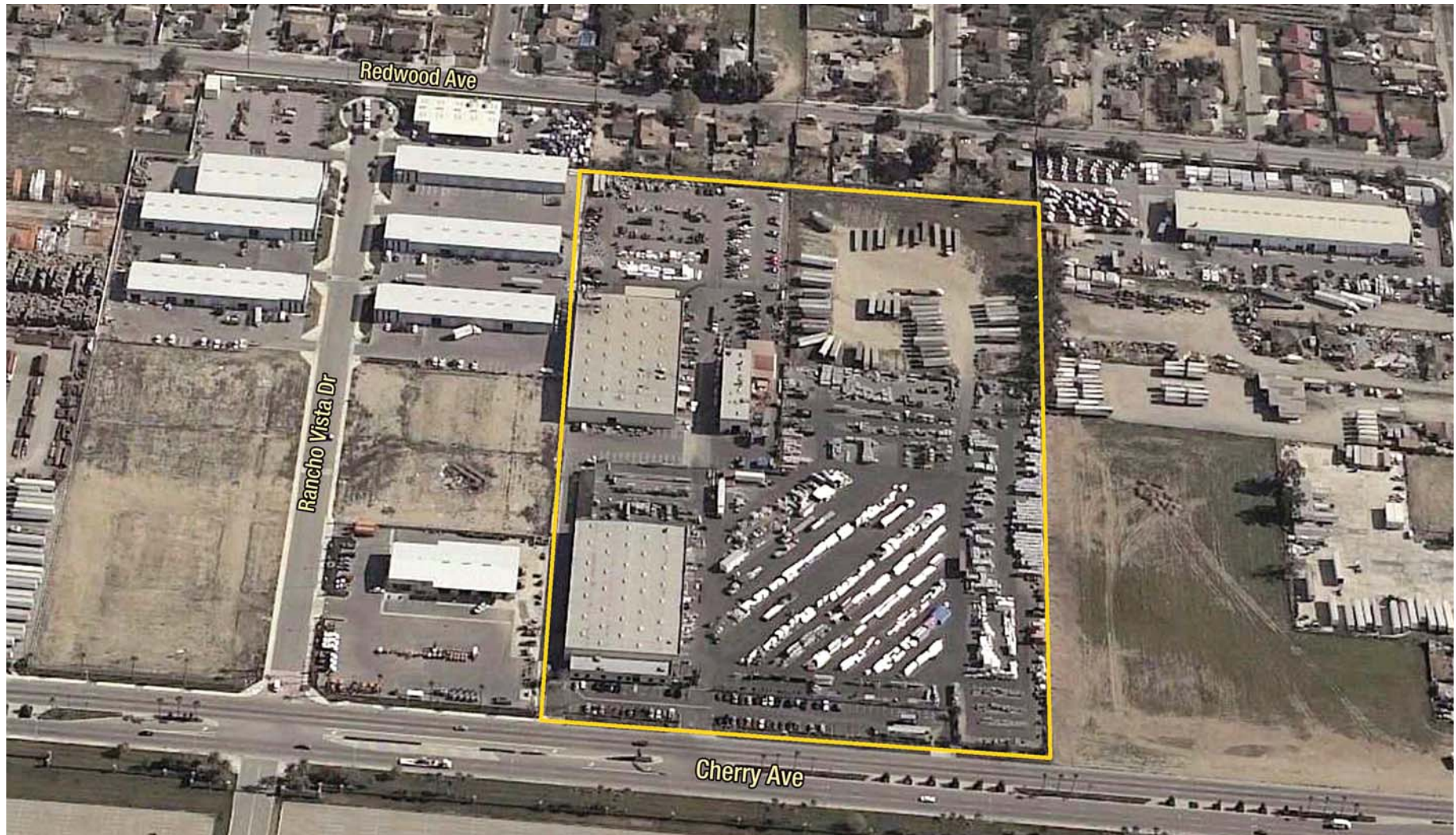
Richard Lee

Vice President
909.945.2339
RLee@naicapital.com
DRE License #01757870

John Boyer

Executive Vice President
909.945.2339
JBoyer@naicapital.com
DRE License #01022177

For Lease Low Coverage Industrial Building on 17.5 Acres



Commercial Real Estate Services, Worldwide.

No warranty, express or implied, is made as to the accuracy of the information contained herein. This information is submitted subject to errors, omissions, change of price, rental or other conditions, withdrawal without notice, and is subject to any special listing conditions imposed by our principals. Cooperating brokers, buyers, tenants and other parties who receive this document should not rely on it, but should use it as a starting point of analysis, and should independently confirm the accuracy of the information contained herein through a due diligence review of the books, records, files and documents that constitute reliable sources of the information described herein.

Nicholas Chang

Vice President
909.945.2339
NChang@naicapital.com
DRE License #01344844

Richard Lee

Vice President
909.945.2339
RLee@naicapital.com
DRE License #01757870

John Boyer

Executive Vice President
909.945.2339
JBoyer@naicapital.com
DRE License #01022177